



platinum

CASA MILLENNIA

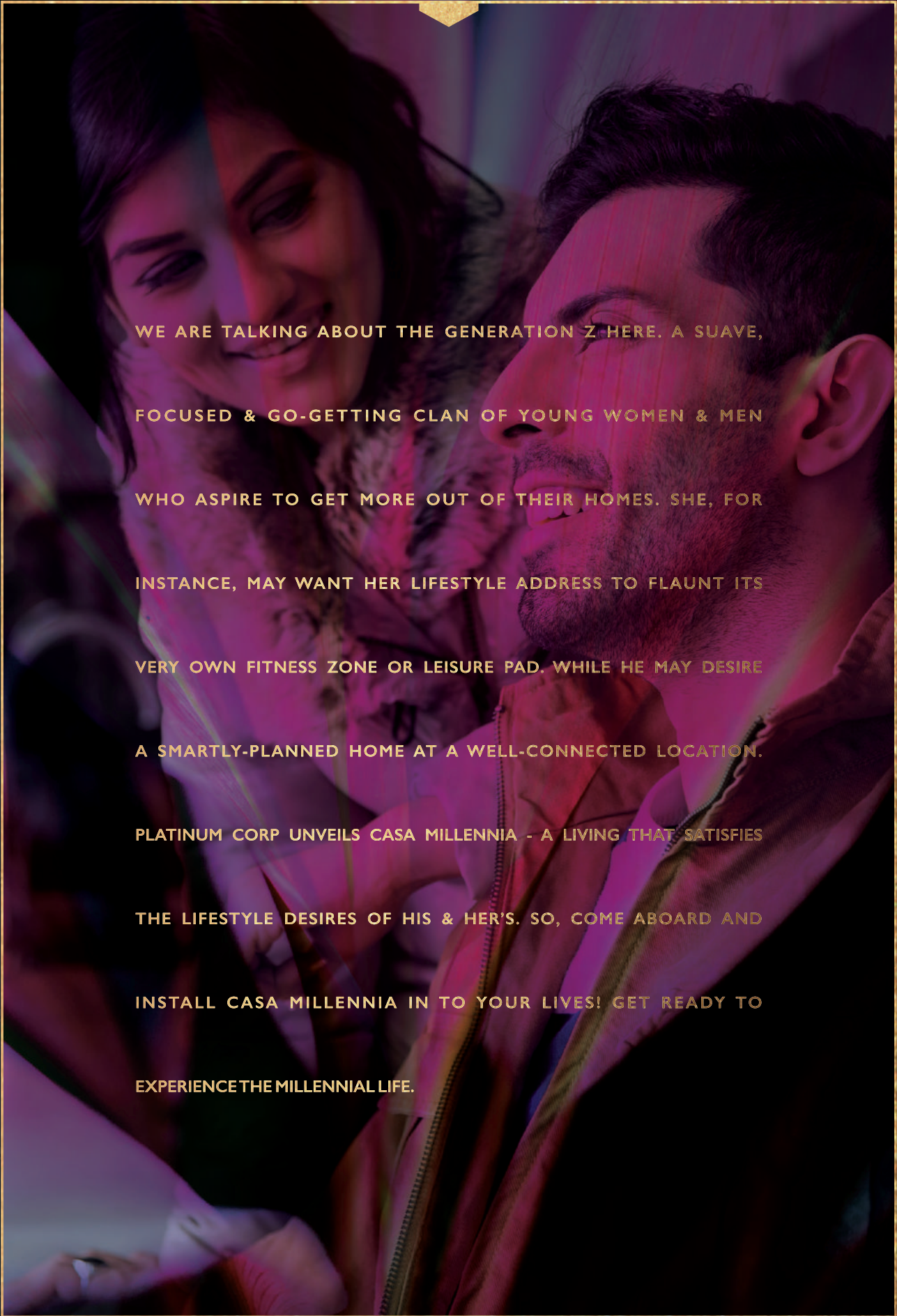
D.N. NAGAR, ANDHERI (W)



Image for representation purpose only

SMARTLY-PLANNED, ELEGANTLY-FINISHED

1 & 2 BED AIR-CONDITIONED HOMES

A young couple is shown in a close-up, smiling and looking at each other. The image is overlaid with a pink and purple gradient. The text is centered over the image.

WE ARE TALKING ABOUT THE GENERATION Z HERE. A SUAVE,
FOCUSED & GO-GETTING CLAN OF YOUNG WOMEN & MEN
WHO ASPIRE TO GET MORE OUT OF THEIR HOMES. SHE, FOR
INSTANCE, MAY WANT HER LIFESTYLE ADDRESS TO FLAUNT ITS
VERY OWN FITNESS ZONE OR LEISURE PAD. WHILE HE MAY DESIRE
A SMARTLY-PLANNED HOME AT A WELL-CONNECTED LOCATION.
PLATINUM CORP UNVEILS CASA MILLENNIA - A LIVING THAT SATISFIES
THE LIFESTYLE DESIRES OF HIS & HER'S. SO, COME ABOARD AND
INSTALL CASA MILLENNIA IN TO YOUR LIVES! GET READY TO
EXPERIENCE THE MILLENNIAL LIFE.



YOGA & MEDITATION LAWN

LOUNGE

TRELLIS WALKWAY

SKY CAFÉ WITH PARTY LAWN

BOX CRICKET



HAPPENING SKY-LIFE INDULGENCES

Artist's Impression



Artist's Impression

CAFÉ & PARTY LAWN



Artist's Impression

YOGA & MEDITATION LAWN



Artist's Impression

BOX CRICKET

WELL-EQUIPPED BUSINESS LOUNGE & OFFICE SPACES, LEVEL I



"i-STUDY STUDIO" WITH WELL-STOCKED LIBRARY, LEVEL I



WELL-EQUIPPED FITNESS CENTRE, LEVEL 2





1 BHK DELUXE
305 SQ. FT.



1 BHK GRANDE
380 SQ. FT.

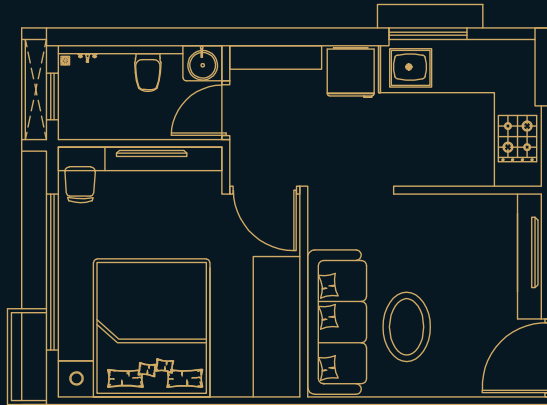


2 BHK DELUXE
440 SQ. FT.

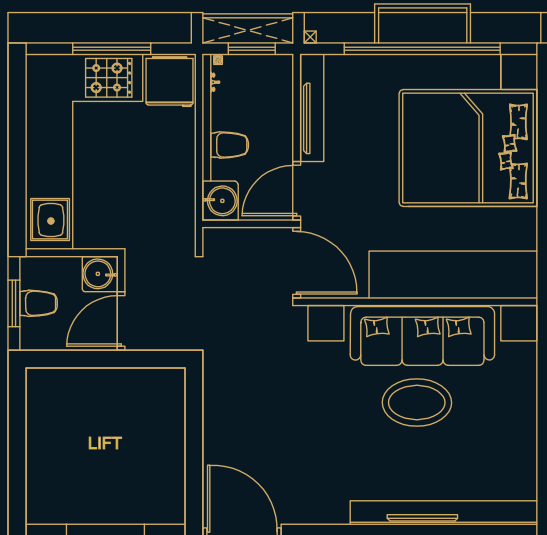




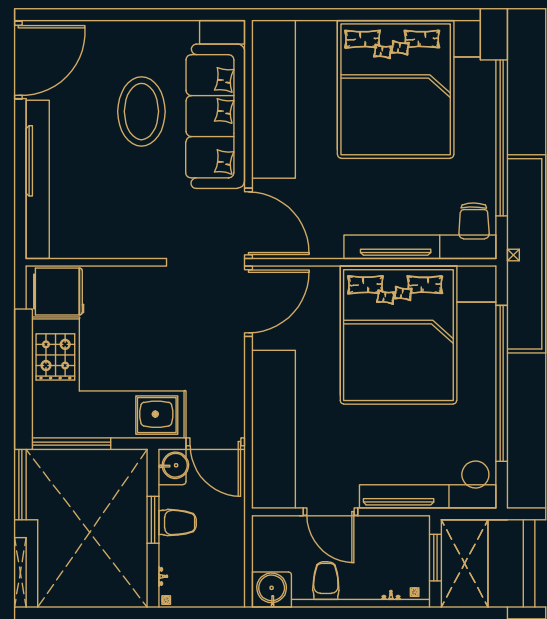
1 BHK DELUXE
305 SQ. FT.



1 BHK GRANDE
380 SQ. FT.

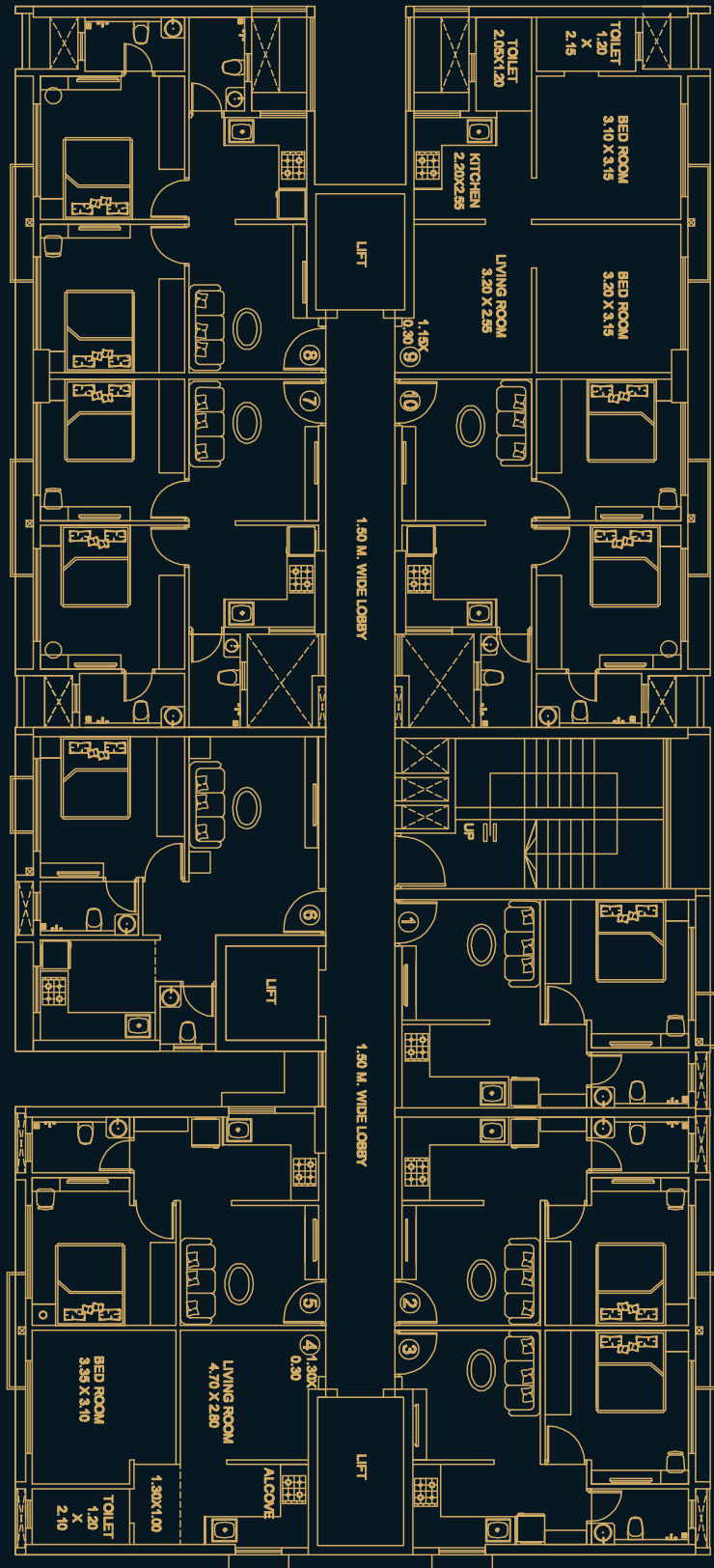


2 BHK DELUXE
440 SQ. FT.





TYPICAL FLOOR PLAN





COME HOME TO A
MILLENNIAL LIFE
THAT SHE WILL LOVE
AND HE WILL ADMIRE



Artist's Impression

- HIGHPOINTS:** CONTEMPORARY 16 STORIED TOWER • ELEGANTLY FINISHED, AIR-CONDITIONED 1 & 2 BED HOMES • DIGITAL DOOR
LOCKS & HOME AUTOMATION • CONVENIENCE SHOPPING & BUSINESS OFFICES • AUTOMATED BASEMENT CAR-PARKING SYSTEM
• ROOF-TOP AMENITIES WITH YOGA ZONE & SIT-OUTS • WELL-DESIGNED LOBBY WITH 3 HIGH SPEED ELEVATORS
• WELL-EQUIPPED FITNESS CENTRE • LAUNDRETTE FACILITY • CONVENIENTLY LOCATED AT ANDHERI WEST



D. N. NAGAR, ANDHERI (W)

AT THE EPICENTER OF JUHU - LOKHANDWALA - VERSOVA



LOCATION MAP



EXCELLENT CONNECTIVITY



D.N. NAGAR METRO STATION – 2 MINS



JUHU BEACH / ISKCON – 5 MINS



ANDHERI RAILWAY STATION – 10 MINS



WESTERN EXPRESS HIGHWAY – 12 MINS



AIRPORT – 20 MINS

A PROJECT BY



Sales Office: Platinum Corp. Experience Centre, Platinum Life, D. N. Nagar, Off Link Road, Andheri (West), Mumbai - 400053 Corporate Office: Platinum Corp., 8th & 9th Floors, Peninsula Heights, CD Barfiwala Road, Juhu Lane, Andheri (West), Mumbai - 400058. Tel: 022 2621 6000 Email: sales@platinumcorp.in | www.CasaMillennia.com

For Details, Call: Aashi Dardi: 808080 4128 | Dimple Patel: 808080 4132 | Hiral Patel: 808080 4136 Sameer Mhapankar : 808080 4125 | Mukesh Dave: 8422865745 | Amit Jadhav: 7506948641

P51800028304

<https://maharera.mahaonline.gov.in>

All plans, features, images, facilities, dimensions and details are tentative and subject to approvals from authorities concerned. Commuting time, specifications, furniture, fixtures and visuals are indicative only. You are required to verify all the details, including approvals, areas, amenities, services, terms of sales, payments and other relevant terms independently with Developer's sales team / office, also by physically visiting the project site and from the authorized website of MahaRERA. All images, 3D views are Artist's impressions and are subject to change at the sole discretion of the Developer. The project is being developed by Platinum Aashiana LLP. Home Loans available from all leading Banks & HFLs.