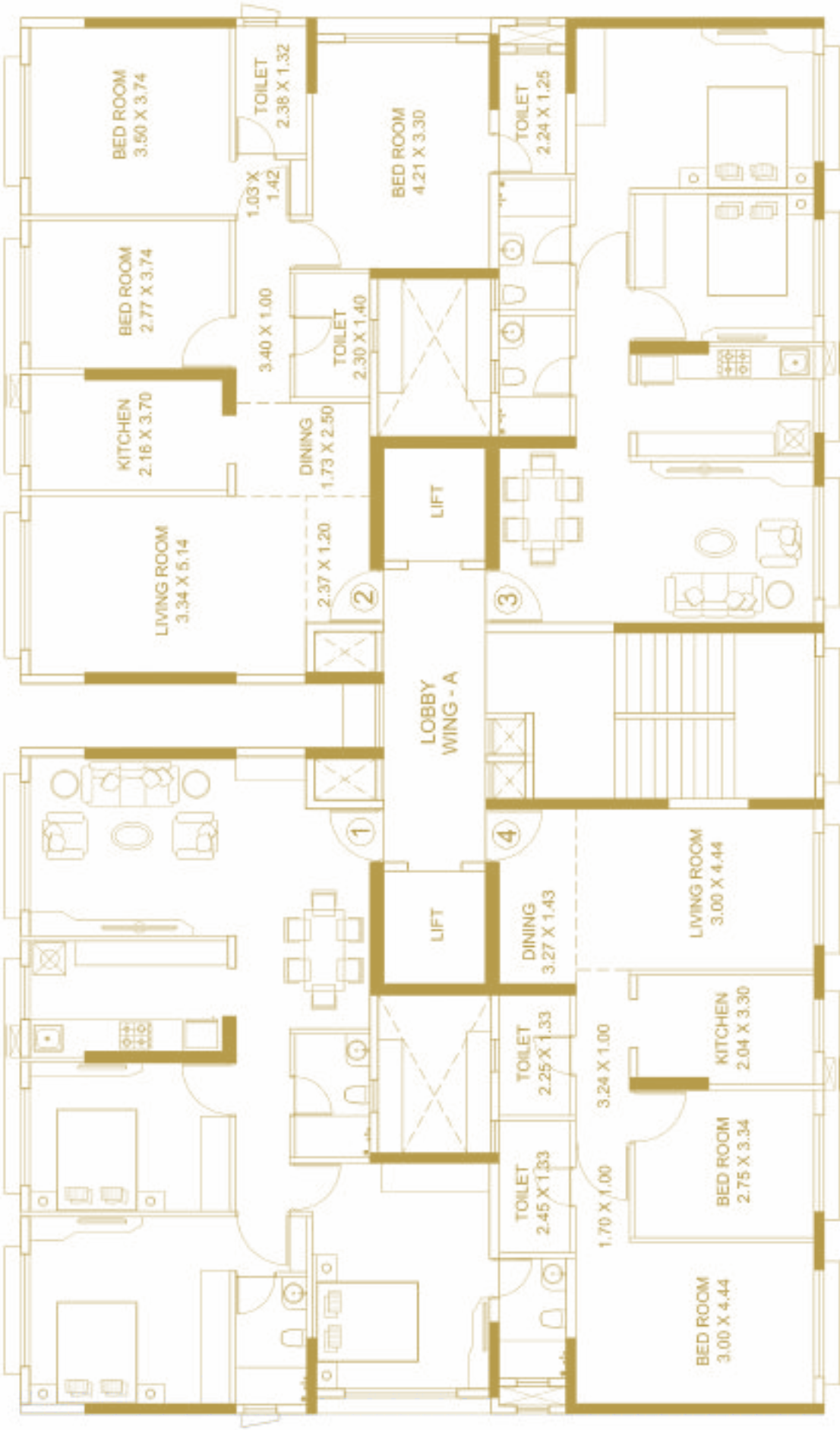
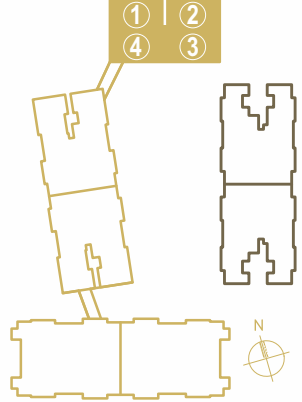


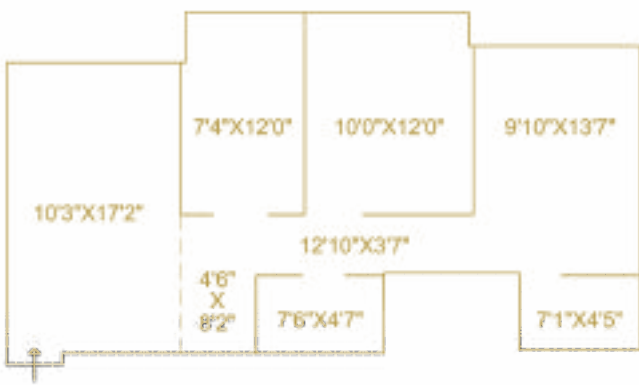
# WING A



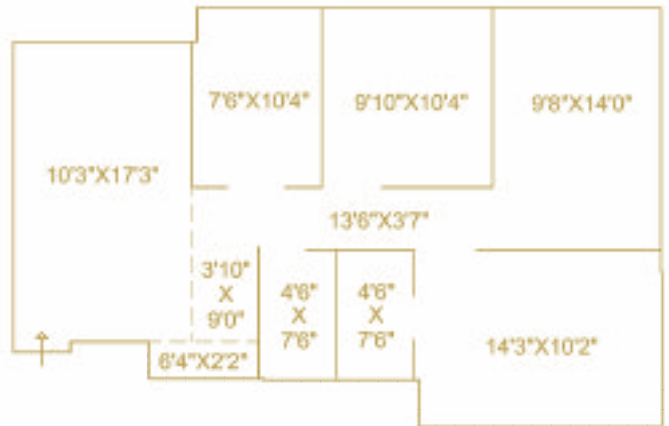
**TYPICAL FLOOR PLAN**  
4<sup>TH</sup> TO 6<sup>TH</sup>, 8<sup>TH</sup> TO 13<sup>TH</sup> & 15<sup>TH</sup> FLOOR



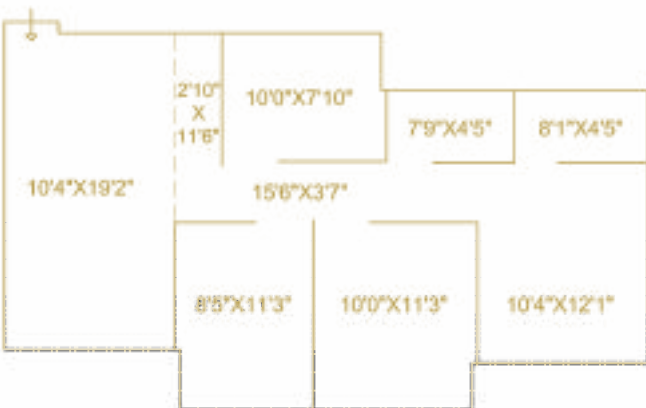
# UNIT AREA CALCULATION



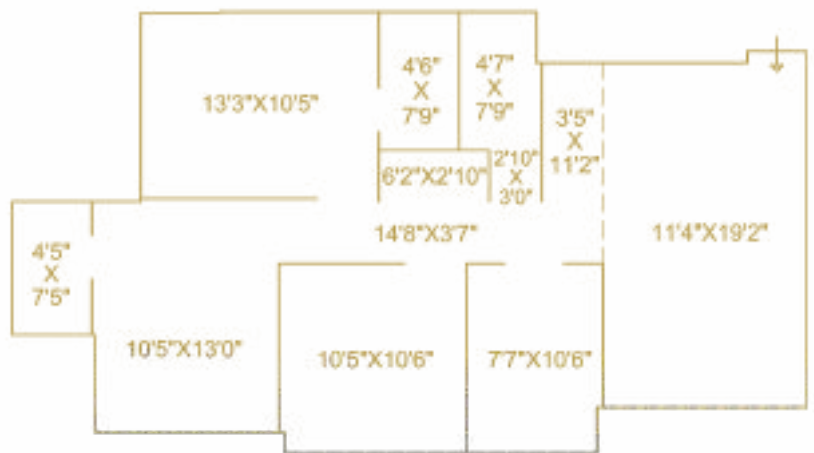
665 SQ. FT. - 2 BHK



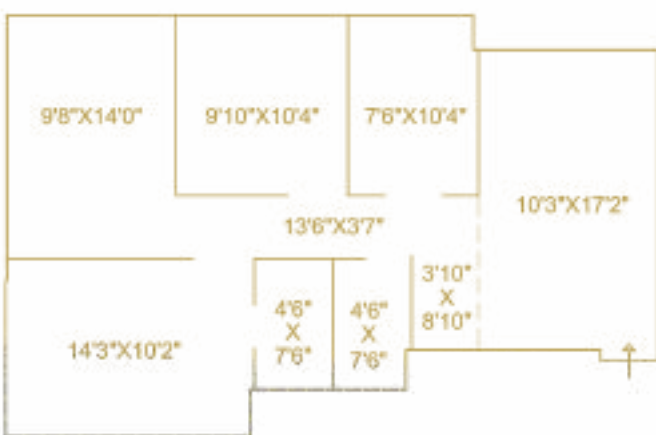
805 SQ. FT. - 3 BHK



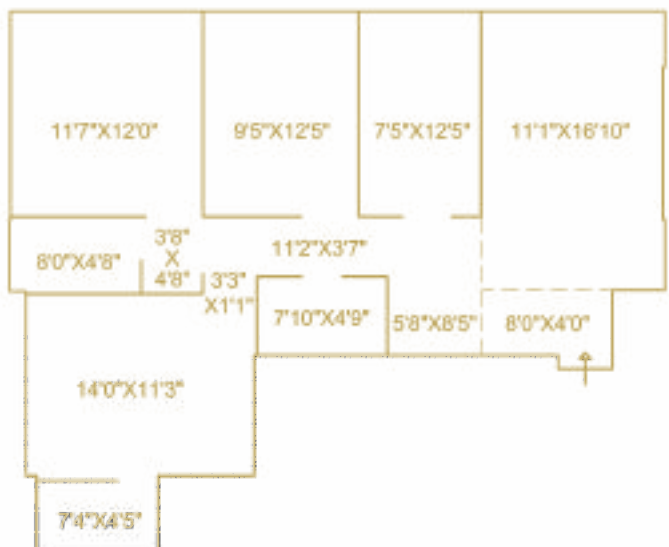
765 SQ. FT. - 3 BHK



900 SQ. FT. - 3 BHK



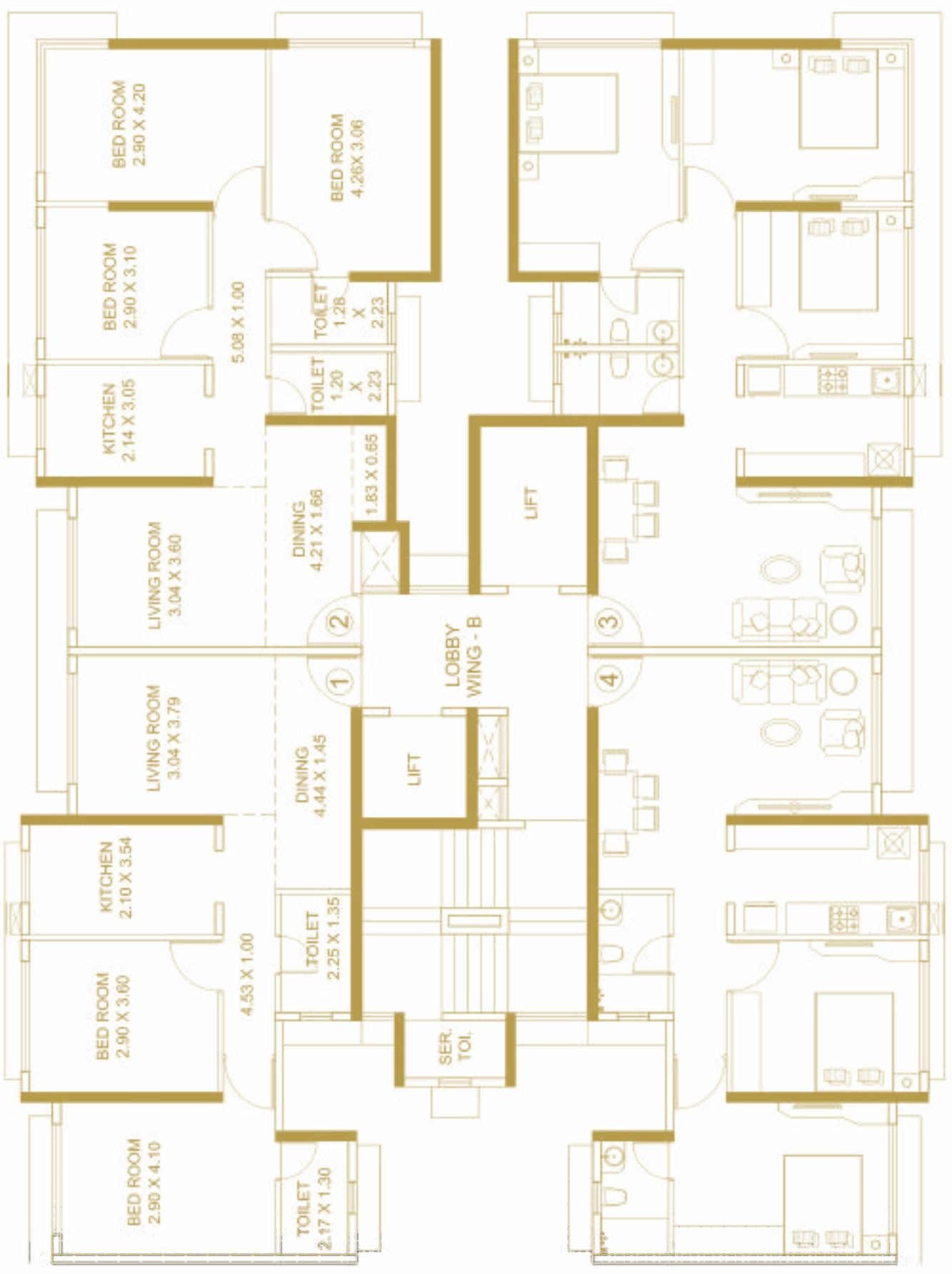
790 SQ. FT. - 3 BHK



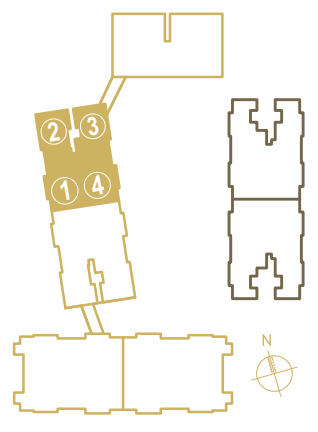
950 SQ. FT. - 3 BHK

\*Dimensions are mentioned in Feet as an alternate mode of measurement for ease of reference and calculation.

# WING B

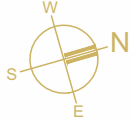
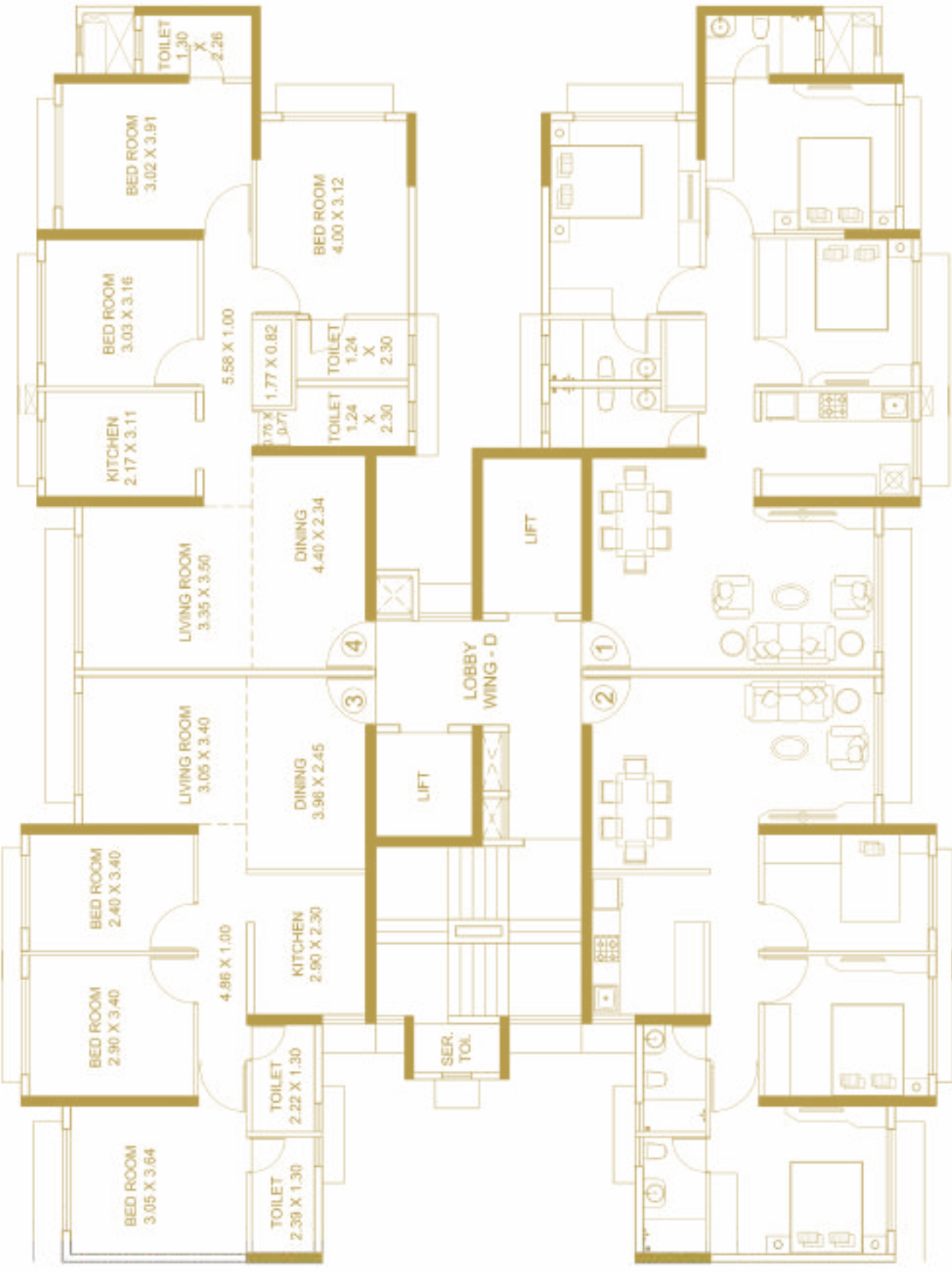


TYPICAL FLOOR PLAN  
2<sup>ND</sup> TO 6<sup>TH</sup>, 8<sup>TH</sup> TO 13<sup>TH</sup> & 15<sup>TH</sup>, 16<sup>TH</sup> FLOOR

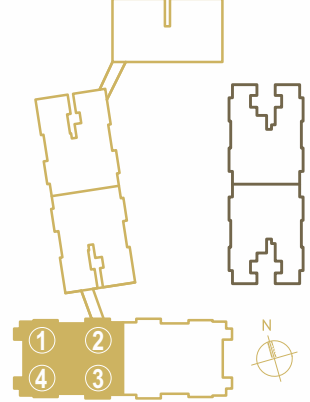




# WING D

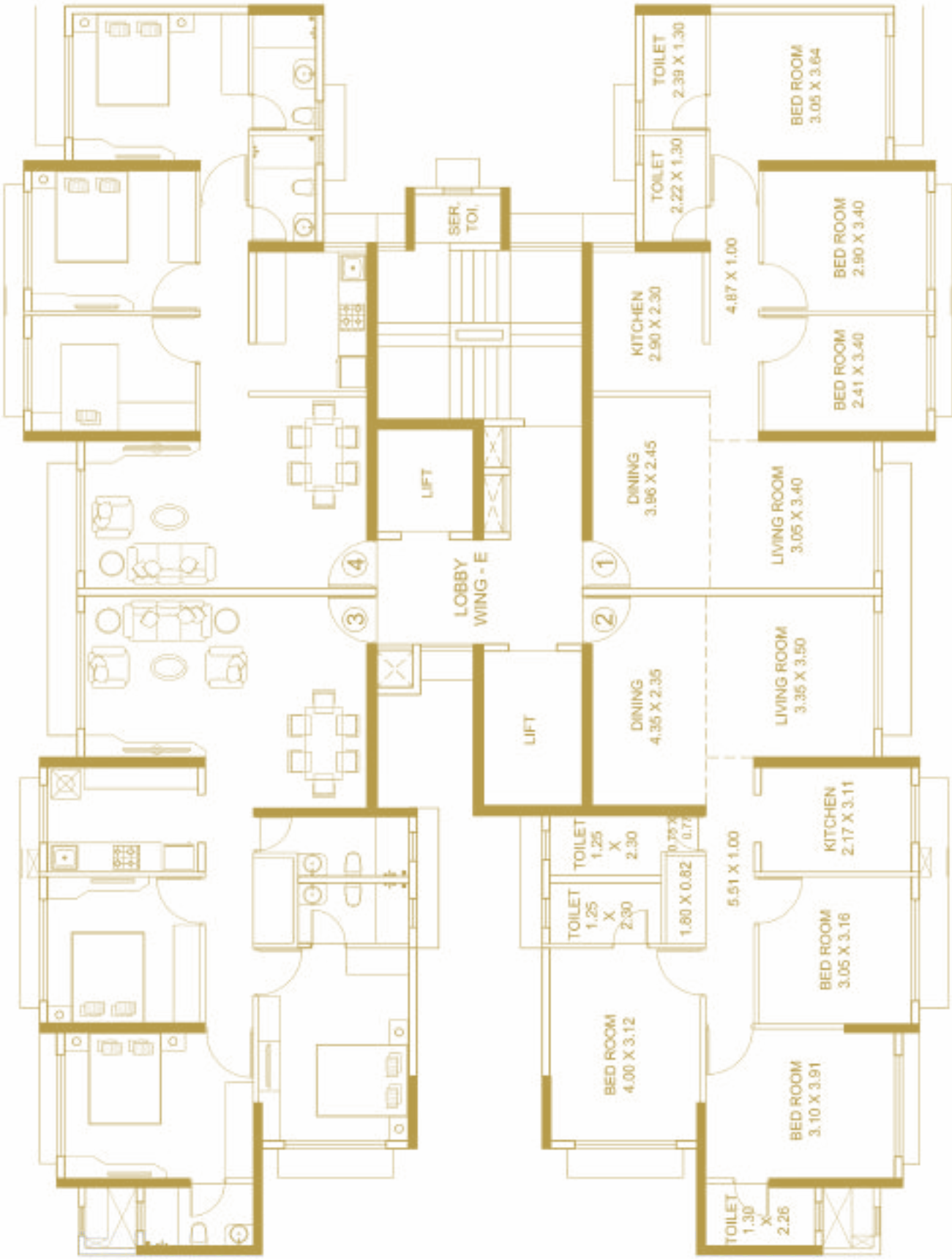


TYPICAL FLOOR PLAN  
3<sup>RD</sup> TO 6<sup>TH</sup>, 8<sup>TH</sup> TO 13<sup>TH</sup> & 15<sup>TH</sup> FLOOR





# WING E



TYPICAL FLOOR PLAN  
 3<sup>RD</sup> TO 6<sup>TH</sup>, 8<sup>TH</sup> TO 13<sup>TH</sup> & 15<sup>TH</sup> FLOOR

