



SHOT ON LOCATION

PLATINUM
LIFE

ANDHERI (W)

SAY YES TO LIFE

PRESENTING
2 & 3 BED LUXURY RESIDENCES

A FIRST-OF-ITS-KIND
LIFESTYLE

PLATINUM
LIFE
ANDHERI(W)

- 3 TOWERS OF 15 STOREYS EACH
- AN ARRAY OF ACTIVE FEATURES
- 20,000 SQ. FT. EXTRAVAGANT SKY-CLUB RECREATIONS WITH SKY BRIDGES
- 11,000 SQ. FT. SPRAWLING GROUND LEVEL AMENITIES
- RESIDENCES FURNISHED WITH BRANDED FITTINGS & FIXTURES



ARTIST'S IMPRESSION

LIFESTYLE EXTRAVAGANZAS
ACROSS 3 TOWERS CONNECTED VIA SKY-BRIDGES
ACTIVE SKY CLUB &
GROUND LEVEL INDULGENCES



SKY-CLUB RECREATIONS - 20,000 SQ. FT



ARTIST'S IMPRESSION

GROUND LEVEL FEATURES - 11,000 SQ. FT.

ADD LIFE TO YOUR DAYS,
AND YEARS TO YOUR LIFE

COME HOME TO
AN ACTIVE WAY OF LIFE



ACTIVE FITNESS

- SKY GYM WITH PERSONAL TRAINER
- AEROBICS & YOGA STUDIO
- MULTI-PURPOSE SPORTS COURT
- JOGGING TRACK & ACUPRESSURE WALKWAY
- MEDITATION GARDEN



ACTIVE COMMUNITY

- CELEBRATION HALL
- PARTY LAWN
- ROOFTOP & GROUND LOUNGES
- SENIOR CITIZENS' GYM



ACTIVE INDULGENCES

- SKY SWIMMING POOL
- ROOFTOP JUICE BAR
- UNISEX SALON
- GAMES ARCADE



ACTIVE PRIVILEGES

- ON-CALL CHAUFFEUR & BUTLER
- VIP GUEST LOUNGE WITH BAR
- PERSONALISED FASHION STUDIO



ARTIST'S IMPRESSION



A METICULOUSLY-PLANNED MASTER PIECE

PROJECT LAYOUT

WING A

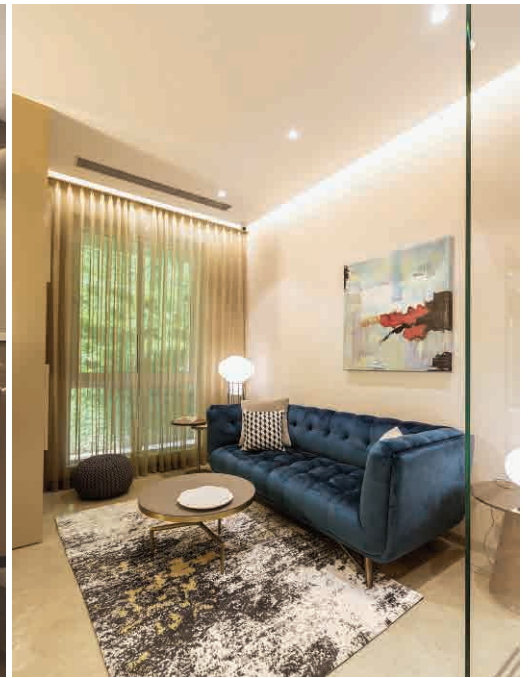
- 2BHK - 665 SQ. FT.
- 3BHK - 950 SQ. FT.

WING B & C

- 2BHK - 665 SQ. FT.
- 3BHK - 790 SQ. FT.
- 3BHK - 805 SQ. FT.

WING D & E

- 3BHK - 765 SQ. FT.
- 3BHK - 900 SQ. FT.

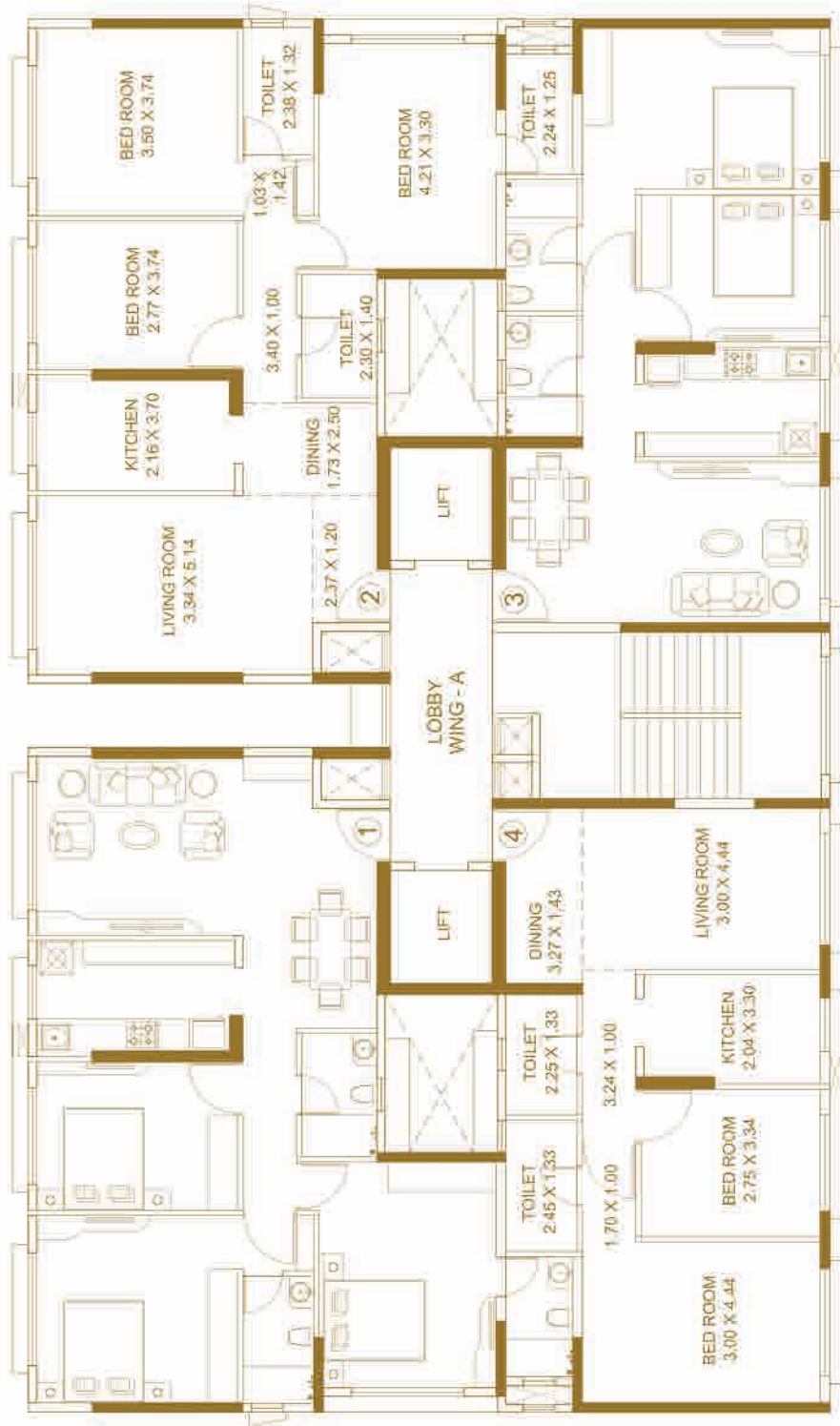


**EXPERIENCE LUXURY
WITH A READY SHOW FLAT
& SALES LOUNGE**

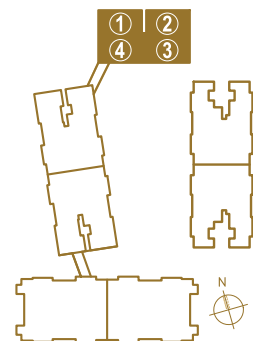
ACTUAL PHOTOGRAPHS



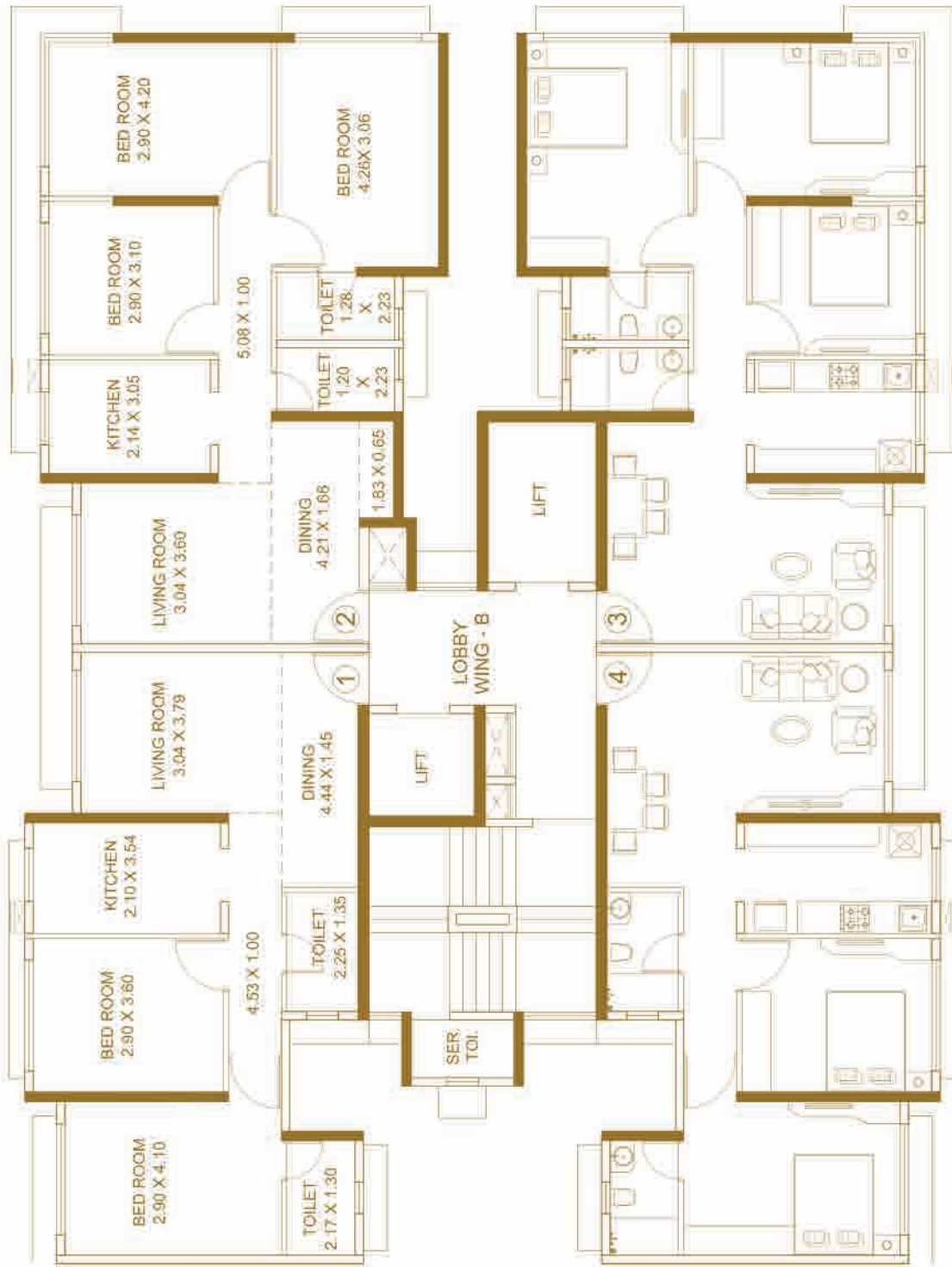
WING A



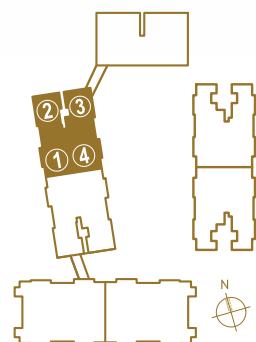
TYPICAL FLOOR PLAN
4TH TO 6TH, 8TH TO 13TH & 15TH FLOOR



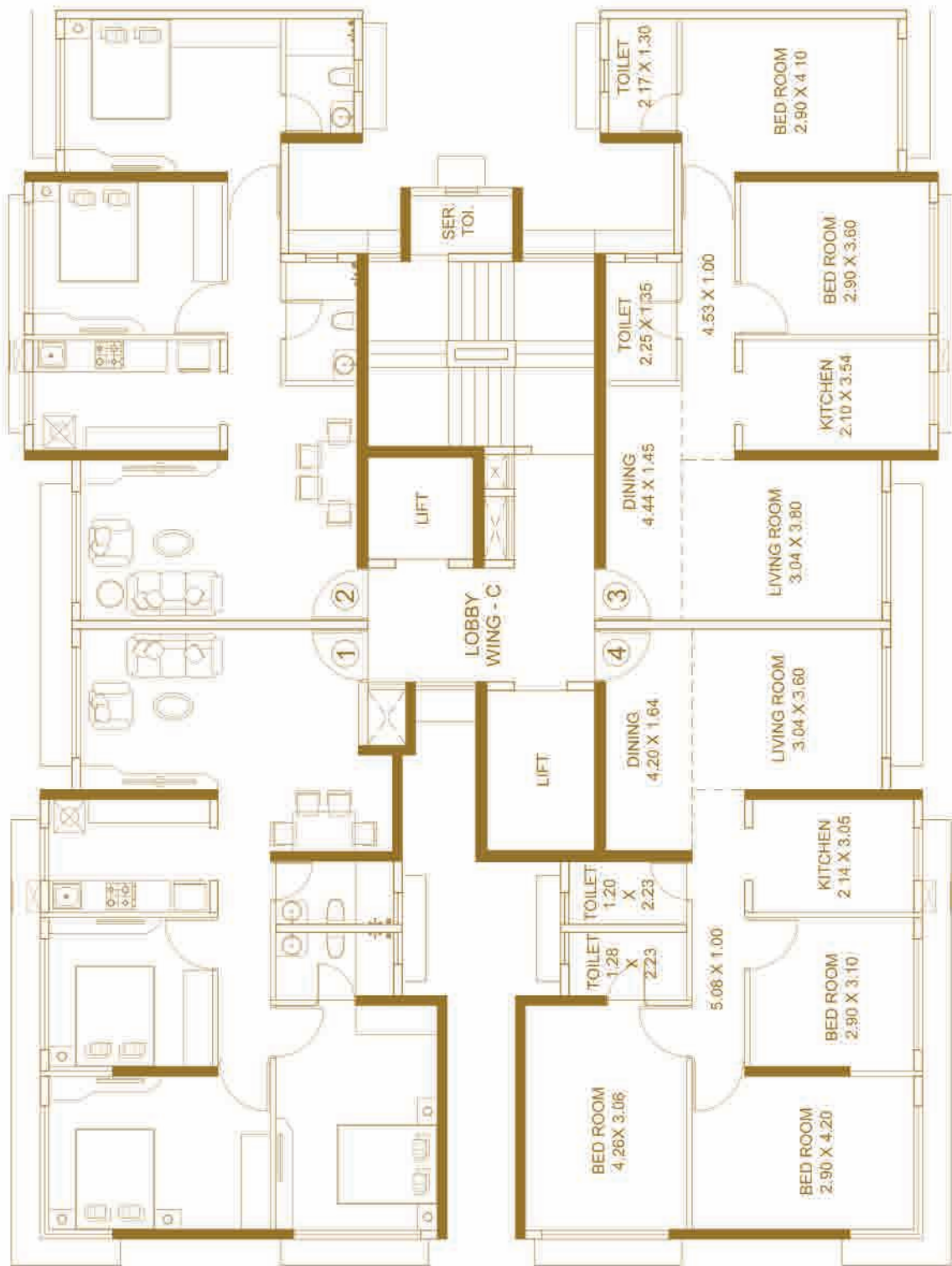
WING B



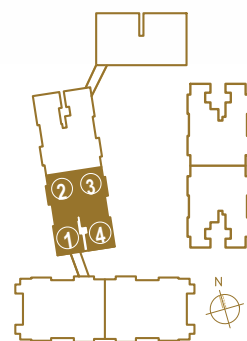
TYPICAL FLOOR PLAN
2ND TO 6TH, 8TH TO 13TH & 15TH, 16TH FLOOR



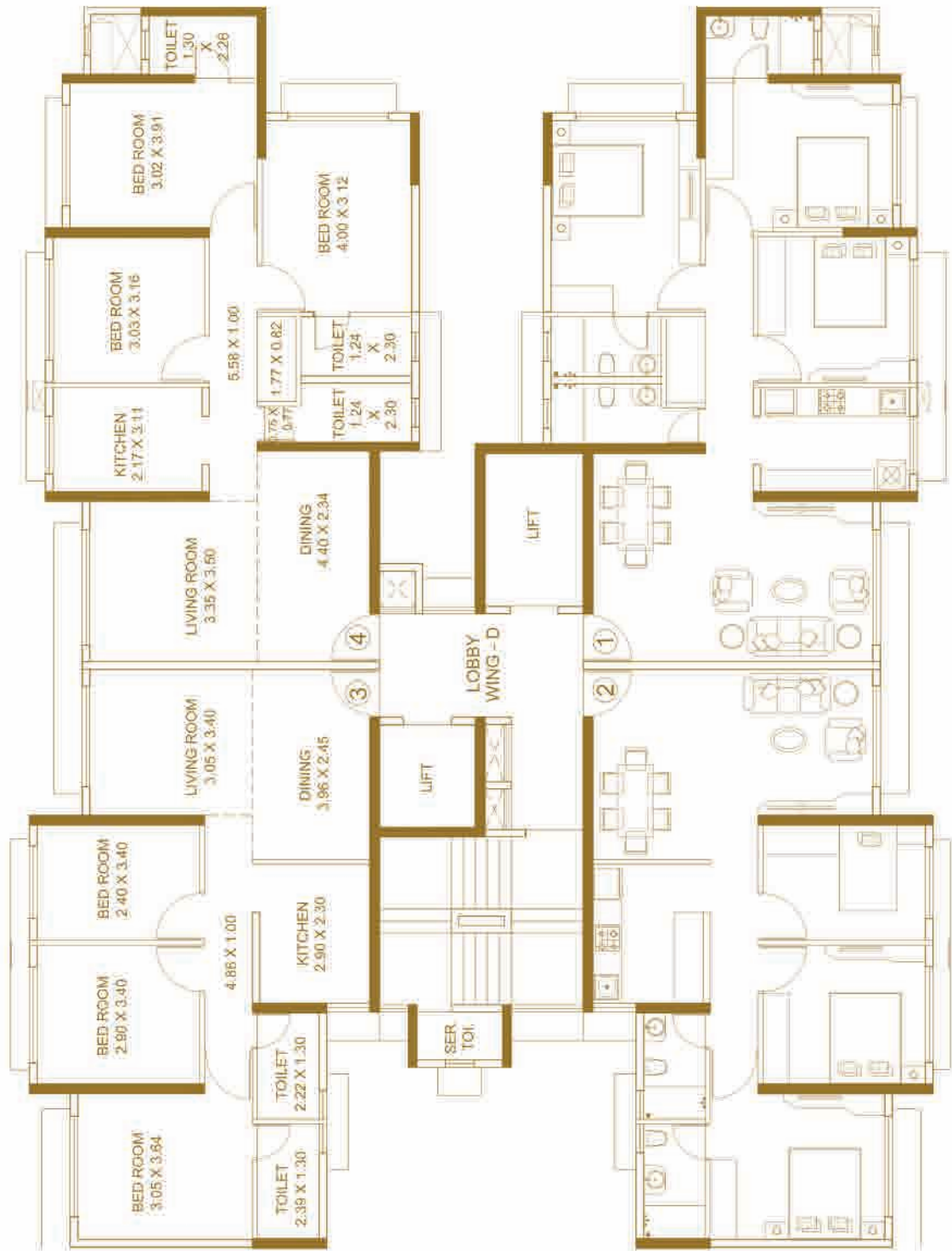
WING C



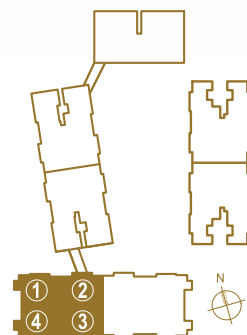
TYPICAL FLOOR PLAN
2ND TO 6TH, 8TH TO 13TH & 15TH, 16TH FLOOR



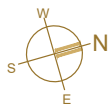
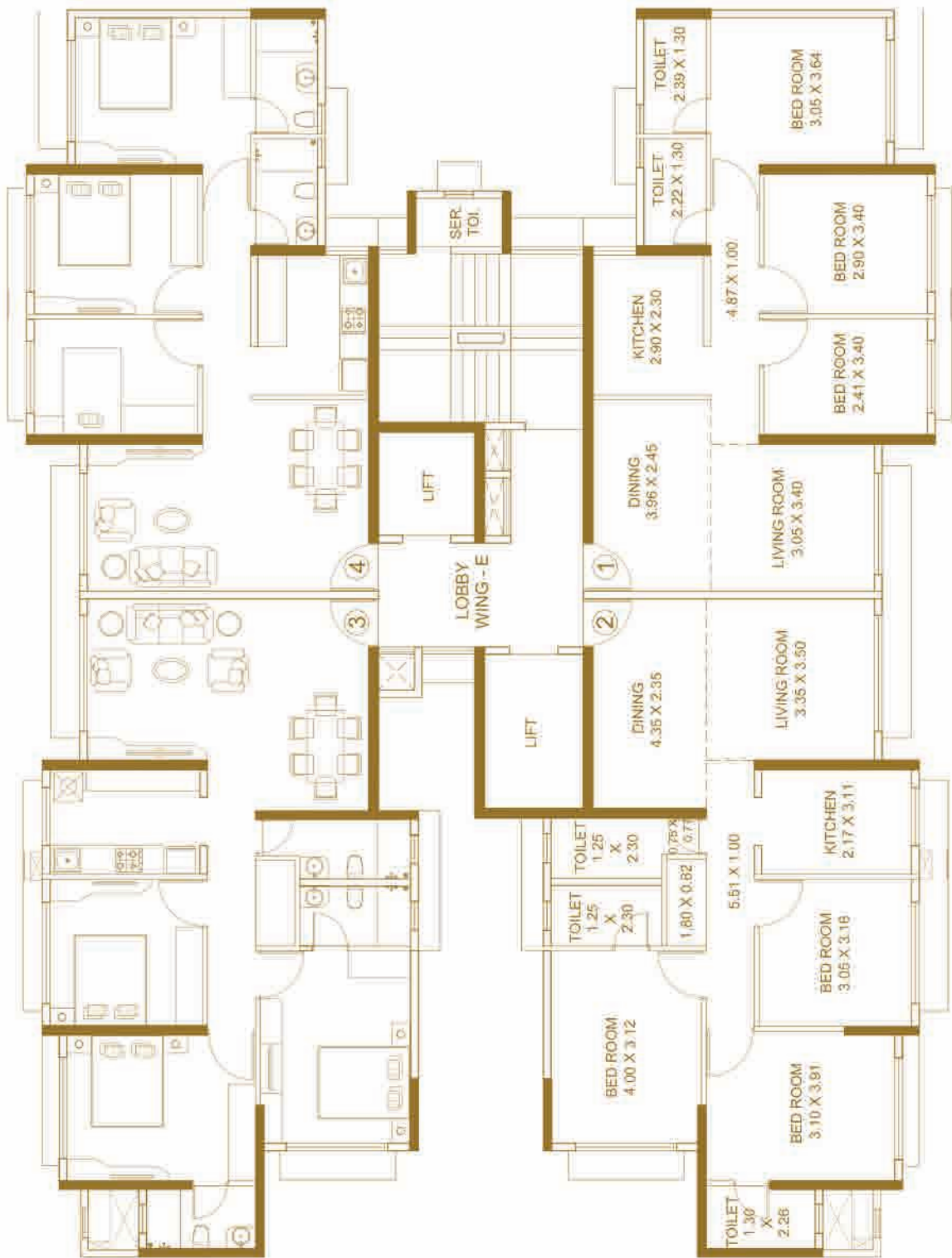
WING D



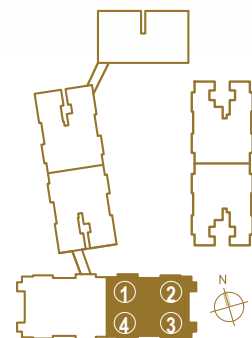
TYPICAL FLOOR PLAN
3RD TO 6TH, 8TH TO 13TH & 15TH FLOOR



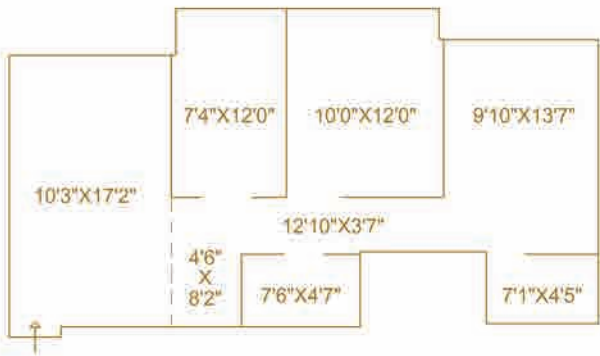
WING E



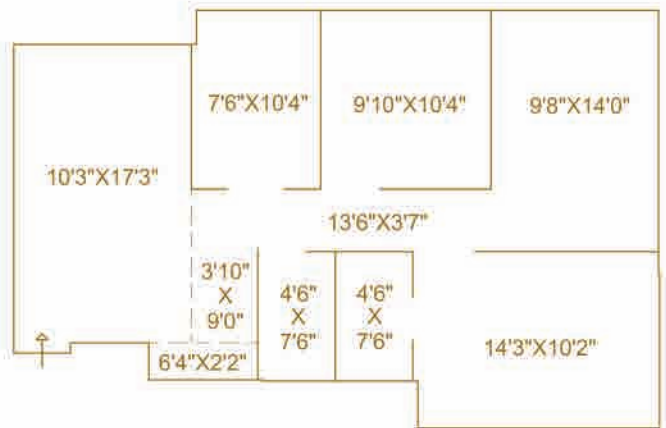
TYPICAL FLOOR PLAN
3RD TO 6TH, 8TH TO 13TH & 15TH FLOOR



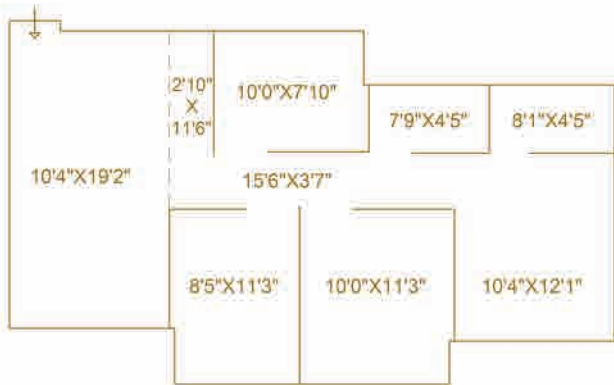
UNIT AREA CALCULATION



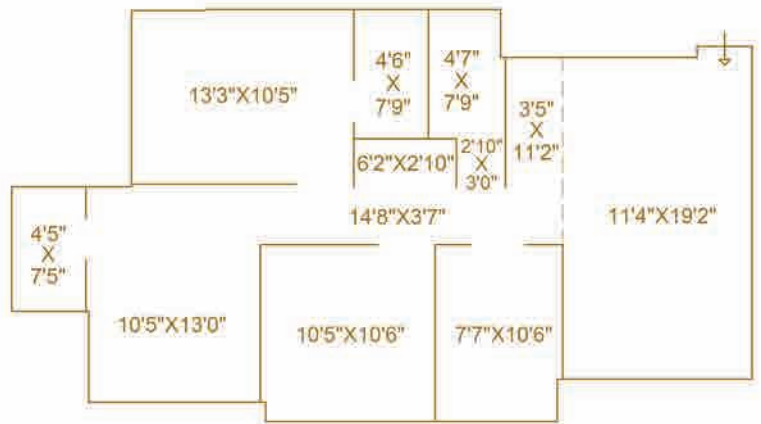
665 SQ. FT. - 2 BHK



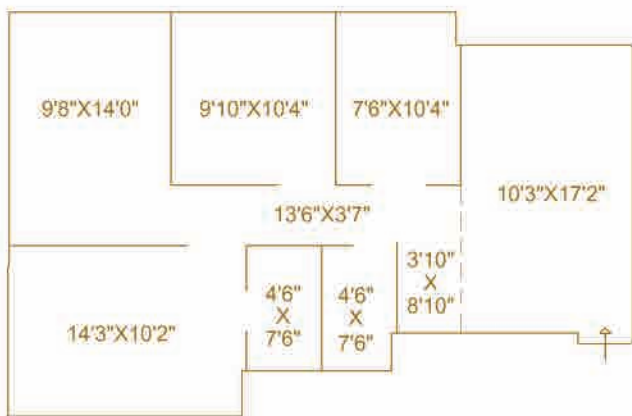
805 SQ. FT. - 3 BHK



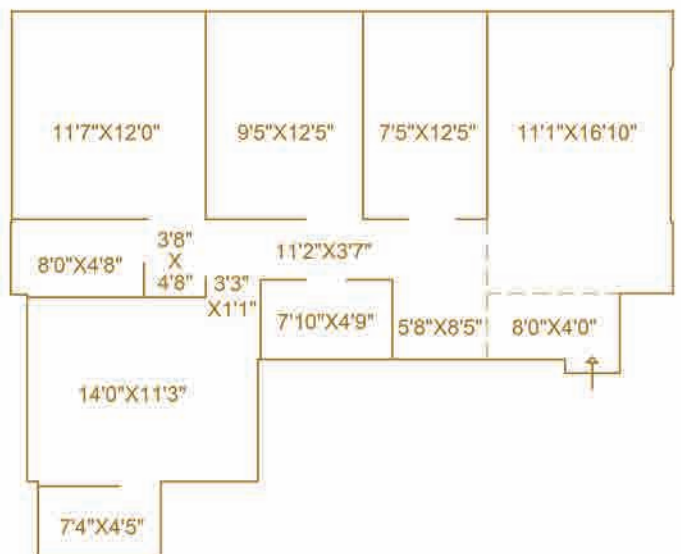
765 SQ. FT. - 3 BHK



900 SQ. FT. - 3 BHK



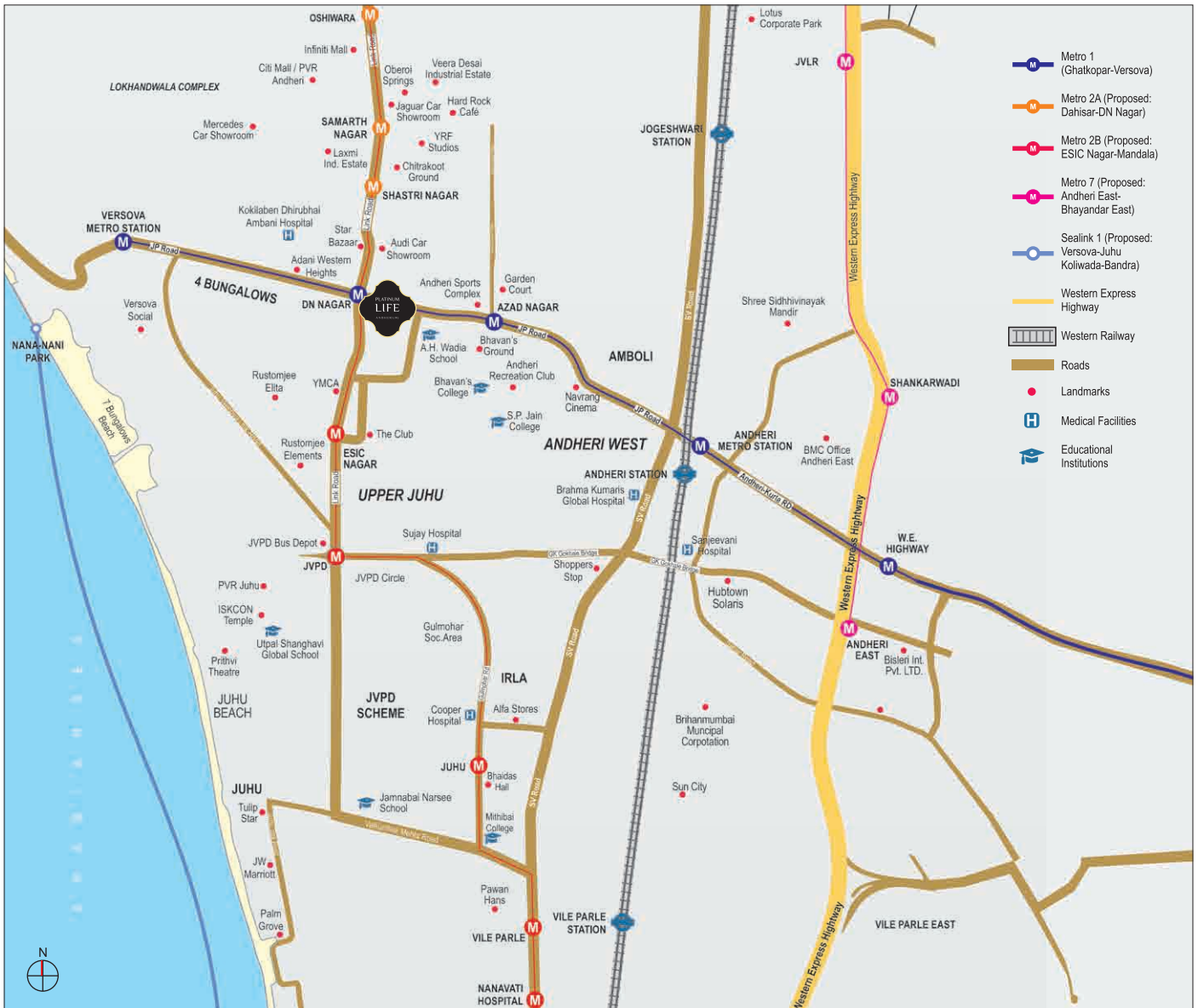
790 SQ. FT. - 3 BHK



950 SQ. FT. - 3 BHK

*Dimensions are mentioned in Feet as an alternate mode of measurement for ease of reference and calculation.

AN ADDRESS SURROUNDED BY A VARIETY OF AVENUES IN ANDHERI (W)



ACTIVE COMFORTS OF CONNECTIVITY

- D. N. NAGAR & AZAD NAGAR, METRO STATIONS - 2 MINS WALK
- OFF NEW LINK ROAD
- ANDHERI & VILE PARLE STATIONS - 10 MINS
- INTERNATIONAL & DOMESTIC AIRPORTS - 15 MINS
- RIGHT OPPOSITE JAIN TEMPLE

STATUS-POINT LOCATION

- THE CLUB & ANDHERI SPORTS CLUB - 5 MINS
- KOKILABEN HOSPITAL - 5 MINS
- PRITHVI THEATRE & INFINITI MALL - 10 MINS
- YRF STUDIOS - 10 MINS
- SURROUNDED BY LOUNGES, PUBS, FINE DINES, ET AL.



Sales Office: Platinum Corp. Experience Centre, Platinum Life, Off Link Road, D. N. Nagar, Andheri (W), Mumbai - 400053.

Corporate Office: Platinum Corp., 8th & 9th Floors, Peninsula Heights, C. D. Barfiwala Marg, Juhu Lane, Andheri (W), Mumbai - 400058. **Email:** sales@platinumcorp.in | www.platinumlife.co.in

For Details, Call: 808080 6535



P51800014518

All plans, features, images, facilities, dimensions and details are tentative and subject to approvals from authorities concerned. Commuting time, specifications, furniture, fixtures and visuals are indicative only. You are required to verify all the details, including approvals, areas, amenities, services, terms of sales, payments and other relevant terms independently with Developer's sales team / office, also by physically visiting the project site and from the authorized website of MahaRERA. All images, 3D views are Artist's impressions and are subject to change at the sole discretion of the Developer. The project is being developed by Samudra Darshan Gruhpravesh LLP. Home Loans available from all leading Banks & HFLs.

<https://maharera.mahaonline.gov.in>