



platinum  
corp.

PLATINUM  
**LIFE**  
ANDHERI (W)

SHOT ON LOCATION

SAY YES TO LIFE



PRESENTING  
2 & 3 BED LUXURY RESIDENCES

A FIRST-OF-ITS-KIND  
LIFESTYLE

PLATINUM  
LIFE

ANDHERI (W)

- 3 TOWERS OF 15 STOREYS EACH
- AN ARRAY OF ACTIVE FEATURES
- 20,000 SQ. FT. EXTRAVAGANT SKY-CLUB RECREATIONS WITH SKY BRIDGES
- 11,000 SQ. FT. SPRAWLING GROUND LEVEL AMENITIES
- RESIDENCES FURNISHED WITH BRANDED FITTINGS & FIXTURES



ARTIST'S IMPRESSION



LIFESTYLE EXTRAVAGANZAS  
ACROSS 3 TOWERS CONNECTED VIA SKY-BRIDGES  
ACTIVE SKY CLUB &  
GROUND LEVEL INDULGENCES



SKY-CLUB RECREATIONS - 20,000 SQ. FT



ARTIST'S IMPRESSION

GROUND LEVEL FEATURES - 11,000 SQ. FT.



ADD LIFE TO YOUR DAYS,  
AND YEARS TO YOUR LIFE

COME HOME TO  
AN ACTIVE WAY OF LIFE



### ACTIVE FITNESS

- SKY GYM WITH PERSONAL TRAINER
- AEROBICS & YOGA STUDIO
- MULTI-PURPOSE SPORTS COURT
- JOGGING TRACK & ACUPRESSURE WALKWAY
- MEDITATION GARDEN



### ACTIVE COMMUNITY

- CELEBRATION HALL
- PARTY LAWN
- ROOFTOP & GROUND LOUNGES
- SENIOR CITIZENS' GYM



### ACTIVE INDULGENCES

- SKY SWIMMING POOL
- ROOFTOP JUICE BAR
- UNISEX SALON
- GAMES ARCADE



### ACTIVE PRIVILEGES

- ON-CALL CHAUFFEUR & BUTLER
- VIP GUEST LOUNGE WITH BAR
- PERSONALISED FASHION STUDIO



ARTIST'S IMPRESSION





## A METICULOUSLY-PLANNED MASTER PIECE

### PROJECT LAYOUT

#### WING A

- 2BHK - 665 SQ. FT.
- 3BHK - 950 SQ. FT.

#### WING B & C

- 2BHK - 665 SQ. FT.
- 3BHK - 790 SQ. FT.
- 3BHK - 805 SQ. FT.

#### WING D & E

- 3BHK - 765 SQ. FT.
- 3BHK - 900 SQ. FT.





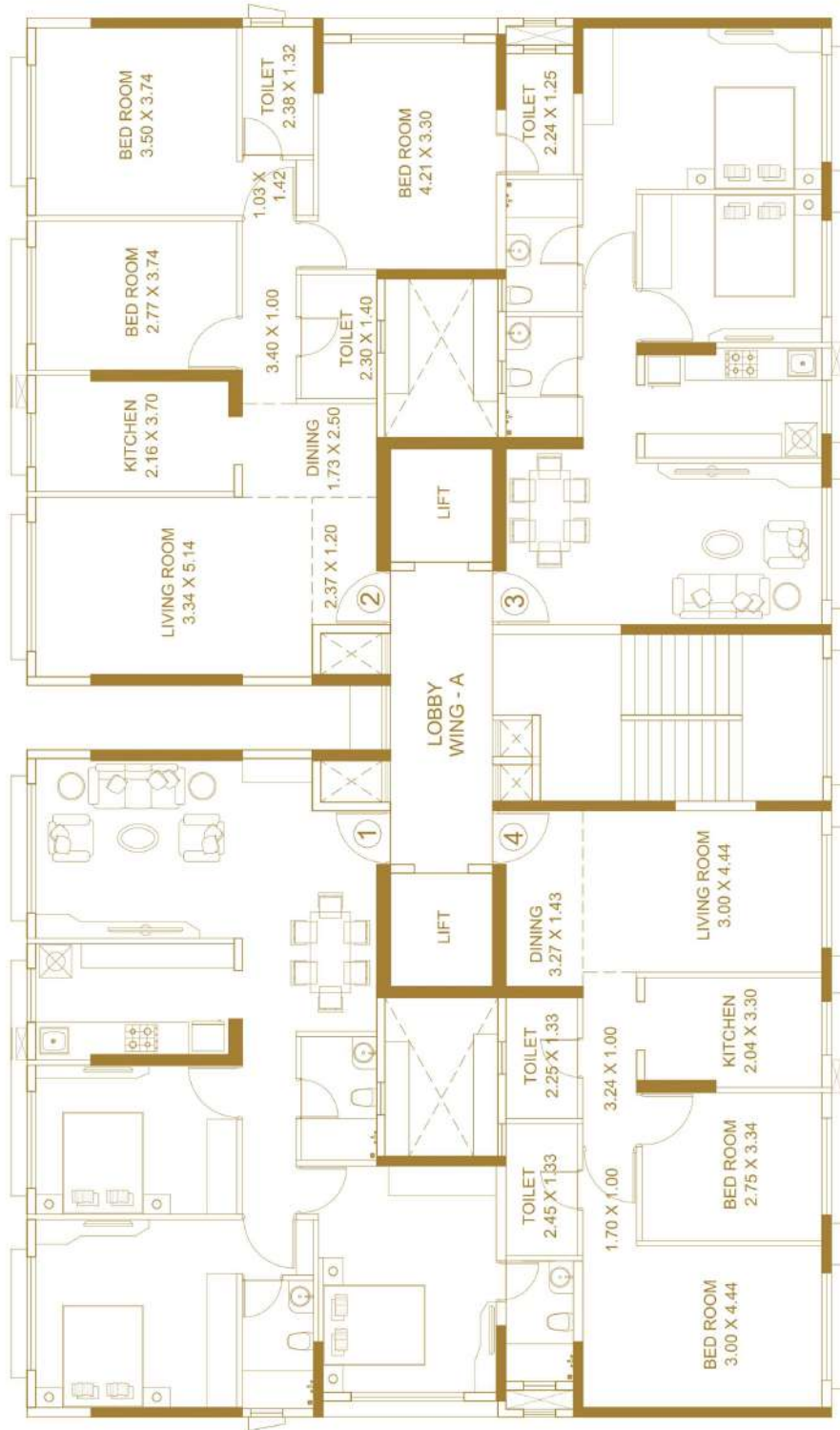
**EXPERIENCE**  
OUR READY SHOW FLAT IN

**360° VIRTUAL REALITY**  
ON YOUR PHONE

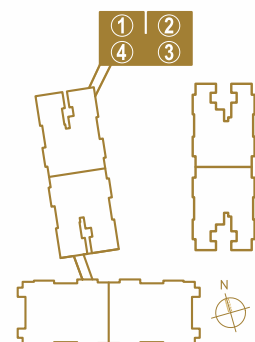
**CLICK HERE TO VIEW**



# WING A



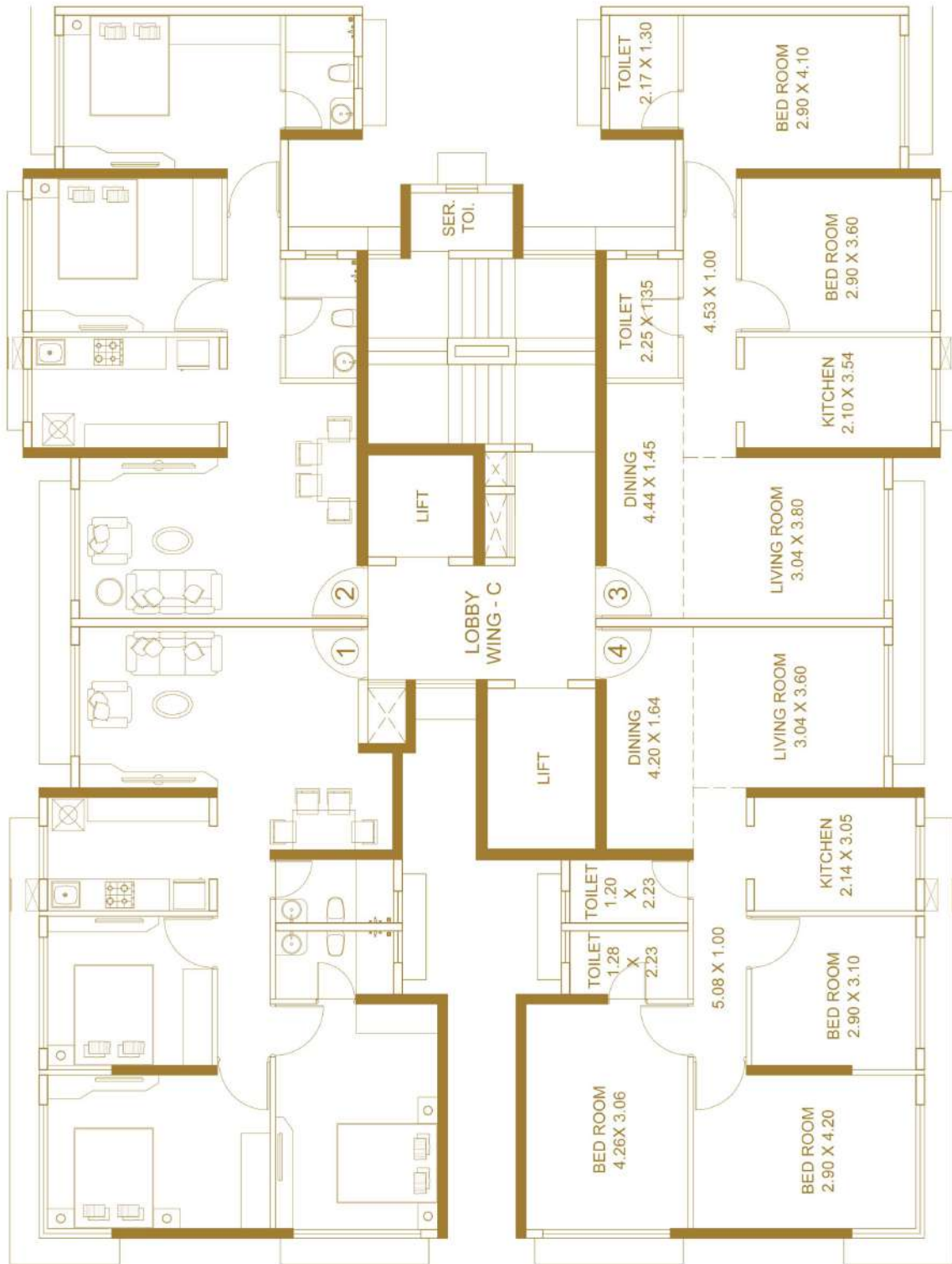
TYPICAL FLOOR PLAN  
4<sup>TH</sup> TO 6<sup>TH</sup>, 8<sup>TH</sup> TO 13<sup>TH</sup> & 15<sup>TH</sup> FLOOR



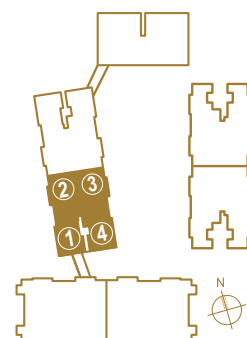




# WING C

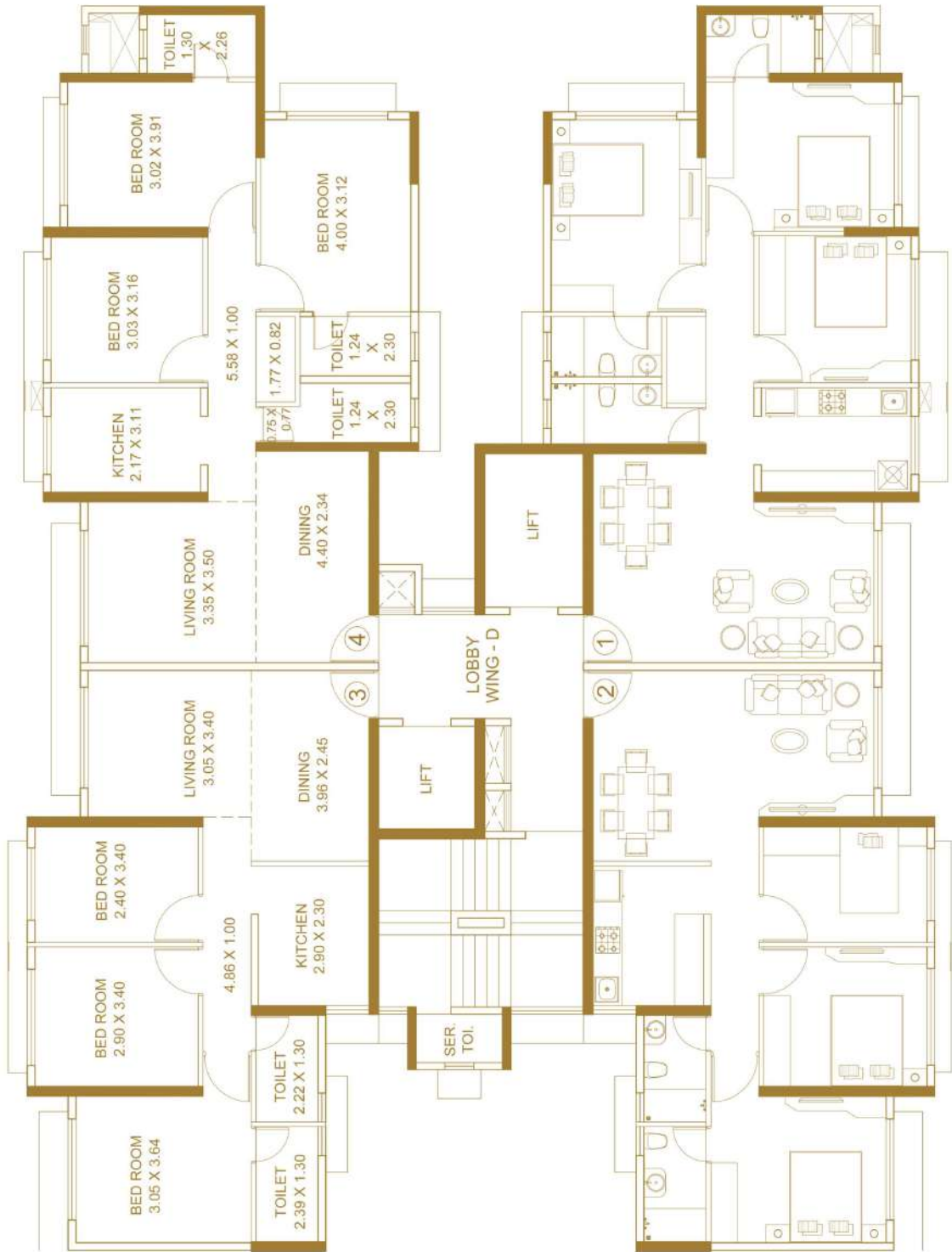


**TYPICAL FLOOR PLAN**  
 2<sup>ND</sup> TO 6<sup>TH</sup>, 8<sup>TH</sup> TO 13<sup>TH</sup> & 15<sup>TH</sup>, 16<sup>TH</sup> FLOOR

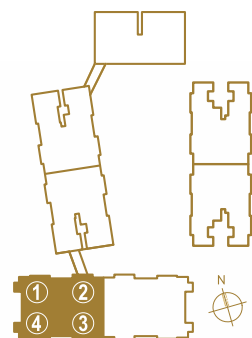




# WING D



TYPICAL FLOOR PLAN  
3<sup>RD</sup> TO 6<sup>TH</sup>, 8<sup>TH</sup> TO 13<sup>TH</sup> & 15<sup>TH</sup> FLOOR

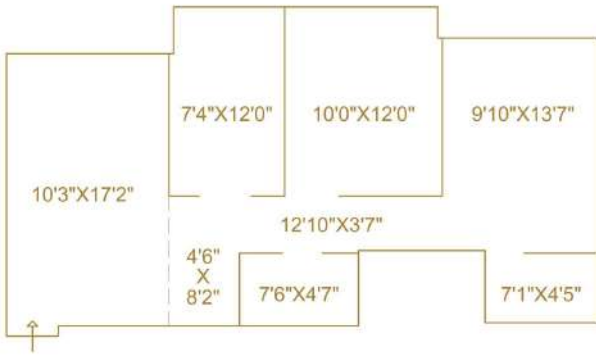




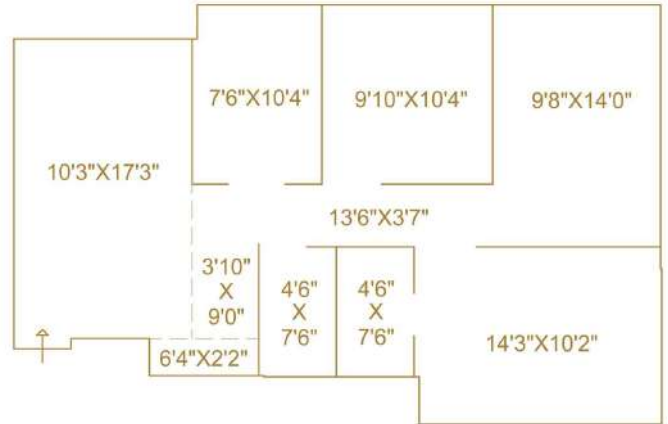




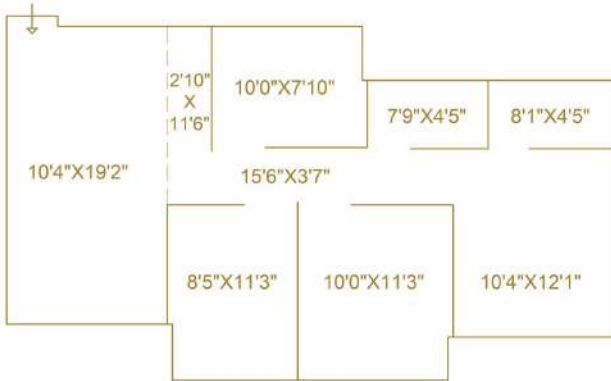
# UNIT AREA CALCULATION



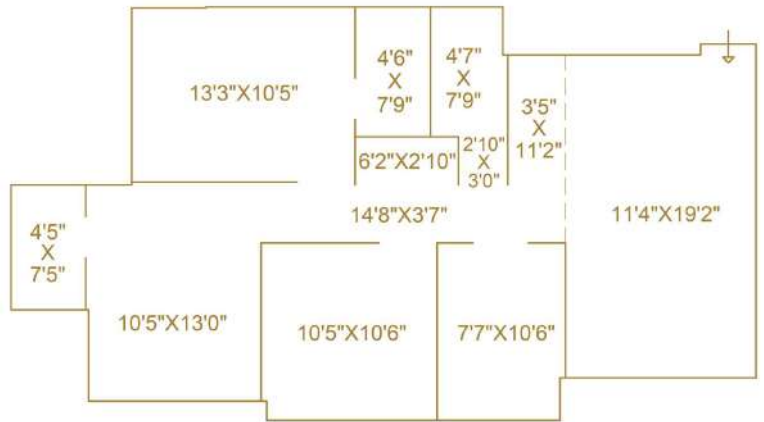
665 SQ. FT. - 2 BHK



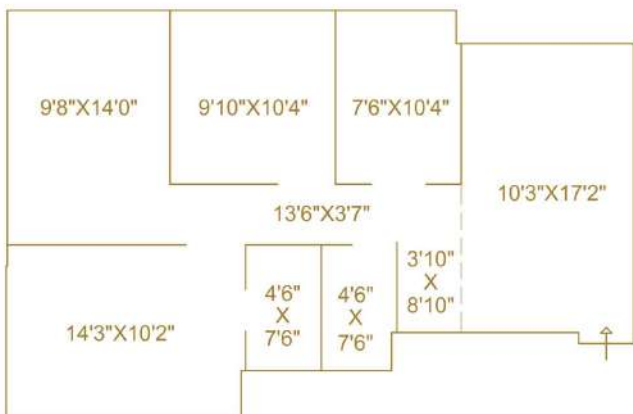
805 SQ. FT. - 3 BHK



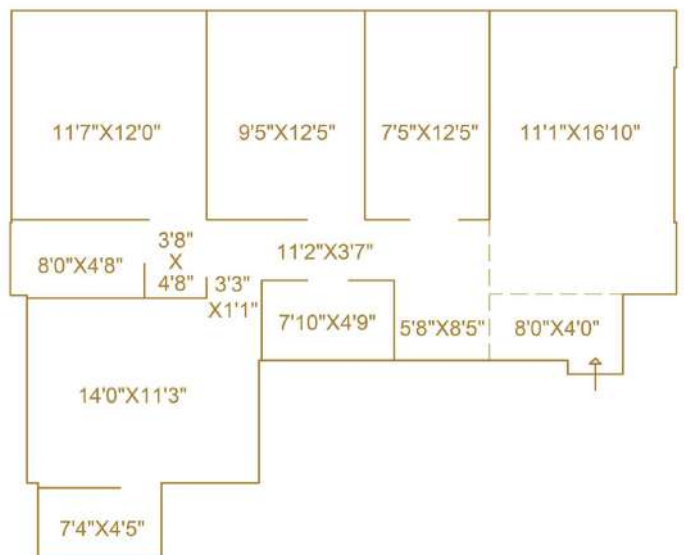
765 SQ. FT. - 3 BHK



900 SQ. FT. - 3 BHK



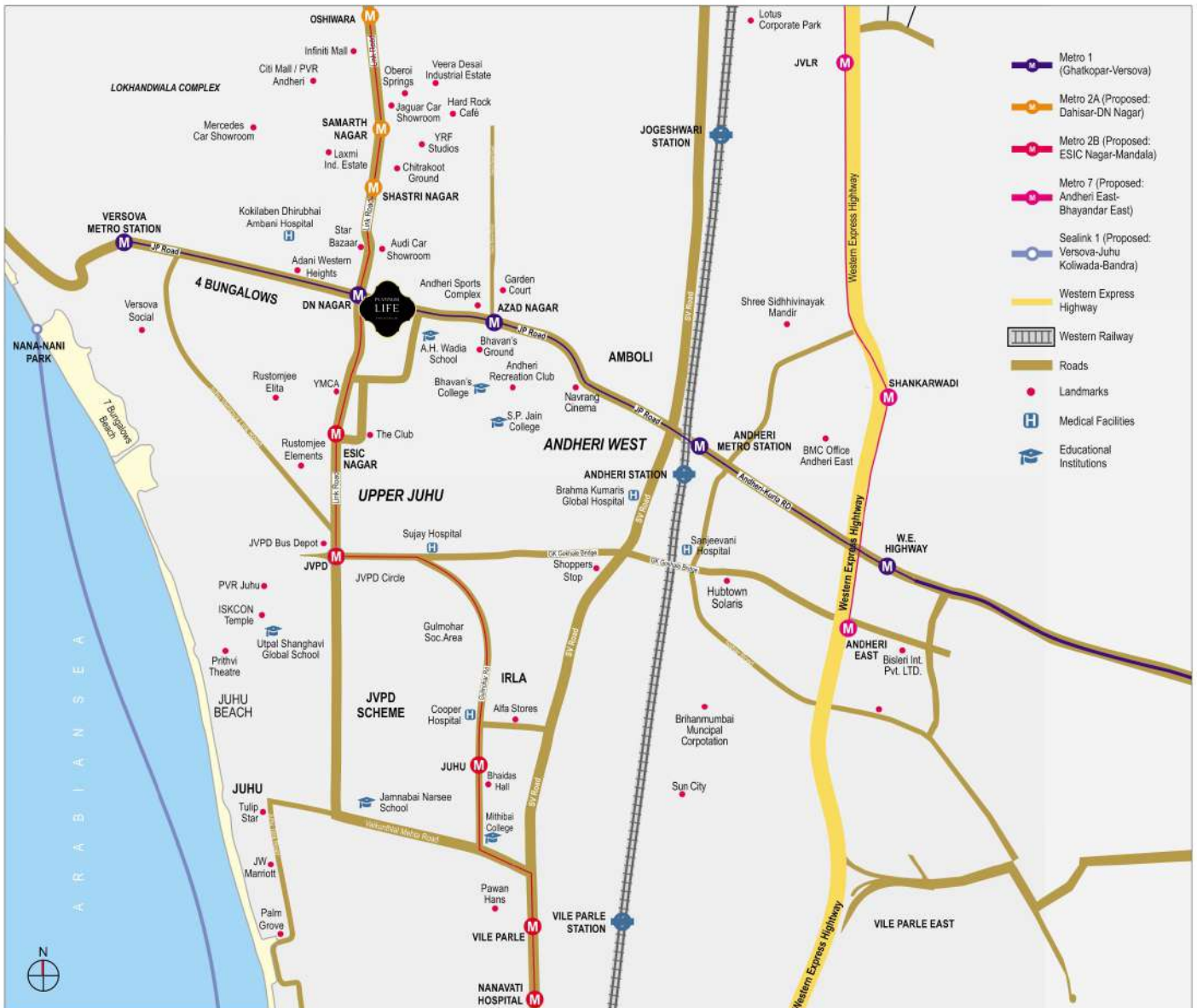
790 SQ. FT. - 3 BHK



950 SQ. FT. - 3 BHK

\*Dimensions are mentioned in Feet as an alternate mode of measurement for ease of reference and calculation.

# AN ADDRESS SURROUNDED BY A VARIETY OF AVENUES IN ANDHERI (W)



## ACTIVE COMFORTS OF CONNECTIVITY

- D. N. NAGAR & AZAD NAGAR, METRO STATIONS - 2 MINS WALK
- OFF NEW LINK ROAD
- ANDHERI & VILE PARLE STATIONS - 10 MINS
- INTERNATIONAL & DOMESTIC AIRPORTS - 15 MINS
- RIGHT OPPOSITE JAIN TEMPLE

## STATUS-POINT LOCATION

- THE CLUB & ANDHERI SPORTS CLUB - 5 MINS
- KOKILABEN HOSPITAL - 5 MINS
- PRITHVI THEATRE & INFINITI MALL - 10 MINS
- YRF STUDIOS - 10 MINS
- SURROUNDED BY LOUNGES, PUBS, FINE DINES, ET AL.



**Sales Office:** Platinum Sales Lounge, Off J. P. Road, D. N. Nagar, Andheri (W), Mumbai - 400 053  
**Corporate Office:** 8<sup>th</sup> & 9<sup>th</sup> Floors, Peninsula Heights, C. D. Barfiwala Marg, Juhu Lane, Andheri (W), Mumbai - 400 058 | **Email:** sales@platinumcorp.in | www.platinumlife.co.in  
**For Details, Call:** 808080 6535

Platinum Life, RERA No.: P51800014518 (<https://maharera.mahaonline.gov.in>)

All plans, features, images, facilities, dimensions and details are tentative and subject to approvals from authorities concerned. Commuting time, specifications, furniture, fixtures and visuals are indicative only. You are required to verify all the details, including approvals, areas, amenities, services, terms of sales, payments and other relevant terms independently with Developer's sales team / office, also by physically visiting the project site and from the authorized website of MahaRERA. The project, developed by Samudra Darshan Gruhpravesh LLP, is mortgaged to Catalyst Trusteeship Limited and ECL Finance Limited. We shall obtain and provide No Objection Certificate (NOC) / permissions from both for sale of the units in the project, if required.

