

DB *life*



P R *life*

LUSH

BY NATURE



PLUSH

BY CHOICE

Unwind in the oasis of calm

As you breathe peace into your life

Disconnect from the world of chaos and noise

While you indulge in the privileges of a posh lifestyle

Revel in your new address of Peace, Privilege and Pride

Where you lose yourself only to find yourself all over again!

WELCOME TO





DISCOVER THE
PEACE

WHERE GREENS SPEAK
THE LANGUAGE OF SILENCE

CHERISH THE
PRIVILEGE

WHERE PLUSH LIFESTYLE
IS AN EVERYDAY EXPERIENCE

LIVE THE
PRIDE

WHERE PRIVACY
IS THE NEW LUXURY



WELCOME TO THE LANDMARK OF
PRISTINE LIFE EXPERIENCES
at Model Town, Versova, Andheri (W)

Project Highlights

- Magnificent Tower in Modern Classic Style
- Green Boulevards with Lush Tree Trail
 - 2 BHK Grand Residences
- Home Automation System & Digital Door Locks
- Grand Entrance Lobby with 2 High-speed Elevators
 - Kids Play Area and Green Landscaping
 - Avant-garde Lifestyle Avenues on Rooftop
 - Parking Tower with Mechanical Car Parking






PLATINUM
PRISTINE

WELCOME TO YOUR
PRISTINE REALM

Magnificent Entrance Lobby



A woman's profile is shown in silhouette, looking upwards and to the right. She is surrounded by a dense arrangement of large, vibrant green leaves. The background is a soft, light green with subtle diagonal lines. The overall mood is peaceful and natural.

B
life

A PEACEFUL
YET WELL-CONNECTED LOCATION

MODEL TOWN, VERSOVA, ANDHERI (W)

PEACE

FACING VERSOVA BEACH

KOKILABEN
DHIRUBHAI AMBANI
HOSPITAL

SEVEN
BUNGALOWS

VERSOVA
METRO

TURF

MODEL
TOWN
GARDEN

VERSOVA
BEACH



LOKHANDWALA
METRO STATION

Actual Photograph

THE LANDMARK ADDRESS WITH A WORLD WITHIN REACH

Prime Location surrounded by
Green Boulevards, Tree Trail and 200+ Acres of Mangroves

Walkable Distance



Versova
Metro
Station
4 Min



Seven
Bungalows
Bus Depot
6 Min



Versova
Beach
15 Min



Kokilaben
Hospital
6 Min



Karamveer
Sports
Complex
7 Min



Model
Town
Garden
2 Min



Kamdhenu
Supermarket
7 Min

FACING LOKHANDWALA

VERSOVA

G7 MALL

200+ ACRES
OF MANGROVES

LOKHANDWALA
CIRCLE



VERSOVA
METRO STATION

Actual Photograph



A WORLD AROUND YOUR ISLE OF SERENITY

Urban Chic Lifestyle Conveniences
within 3 Km Radius

Restaurants & Pubs

- Global Fusion
- Mainland China
- Bombay Cocktail Bar
- Yazu
- Barrel & Co.

Hospitals & Pathology Labs

- Kokilaben Dhirubhai Ambani Hospital
- Bellevue Multi-speciality Hospital
- Shradha Vihar Hospital
- Aashirwad Hospital
- Suburban Diagnostics

Malls & Multiplexes

- Infiniti Mall
- Citi Mall
- Fun Republic
- Cinepolis
- PVR - Citi Mall

Schools & Colleges

- JBCN International School
- Bhaktivedanta Mission School
- Billabong High International School
- Bhavan's College
- S.P. Jain Institute

Clubs & Gymkhanas

- Celebration Club
- The Club
- Juhu Vile Parle Gymkhana
- Andheri Sports Complex
- Recreation Club

5 & 4 Star Hotels

- JW Marriott
- Novotel Juhu
- Ramada Plaza
- The Empresa Hotel
- Sun-n-Sand Hotel



D
life
B

A LANDMARK OF
EXCLUSIVE LIFESTYLE PRIVILEGES

STATE-OF-THE-ART LIFESTYLE AMENITIES
FOR HEALTH & RECREATION

PRIVILEGE



LIFE REJUVENATES
AMIDST THE SKY

Avant-garde Lifestyle Amenities
on Rooftop





Sky Lounge with Sit-outs

Artist's Impression



Family Zone with Rooftop Landscaping

Artist's Impression



Sky Yoga & Meditation Zone

Artist's Impression



Well-equipped Fitness Centre

Artist's Impression



P
life
B

— ● —
PRIDE
— ● —

A HOME THAT MEETS
YOUR STATUS & PRIDE
A WORLD OF STELLAR LIFESTYLE SPACES

THE MARK
OF YOUR ARRIVAL

Grand Entrance Lobby with
2 High-speed Elevators



Artist's Impression



Artist's Impression



Artist's Impression



Artist's Impression

SPACES THAT REDEFINE OPULENCE & STYLE

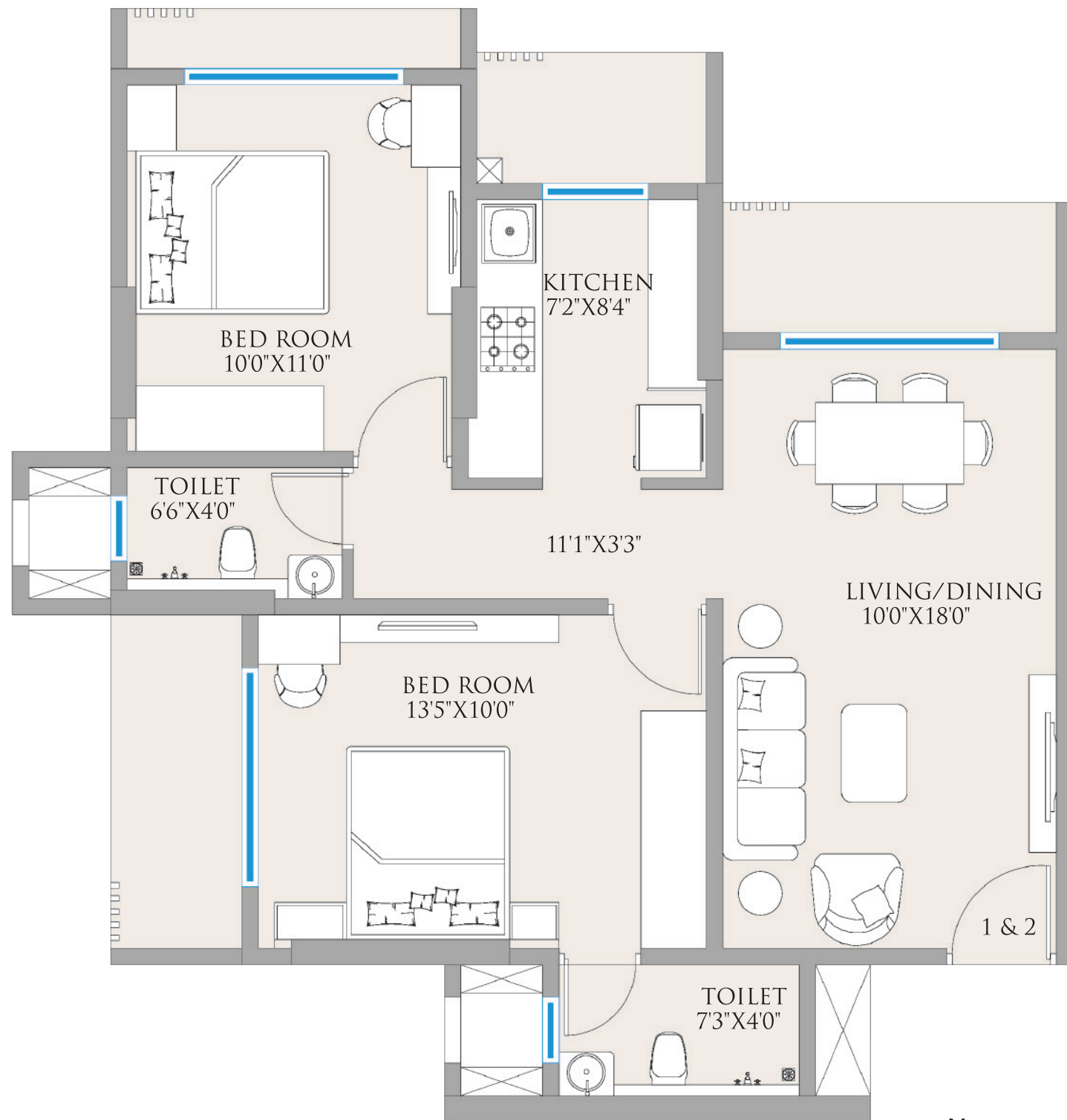
- Well-designed Living Spaces
- Spacious Bedrooms
- Modular Kitchen
- Bath Spaces with World-class Sanitary Fittings

TYPICAL FLOOR PLAN

2-BHK	FLAT NO.	SQ.FT.
LUXURY	1, 2	610
GRANDE	3	575
DELUXE	4	520



UNIT PLAN



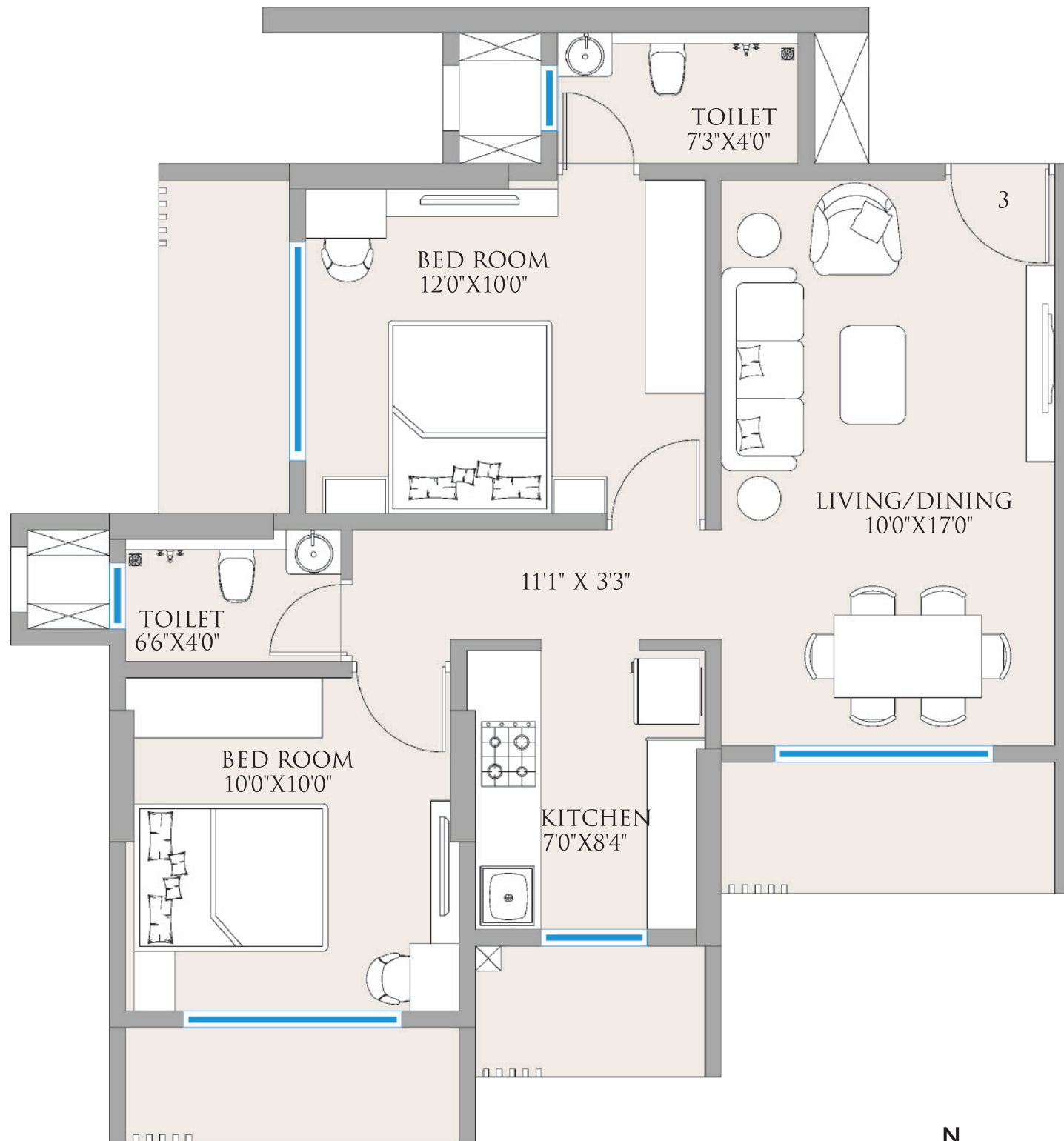
610 SQ.FT.

ISOMETRIC VIEW



2-BHK LUXURY (UNIT 1 & 2)

UNIT PLAN



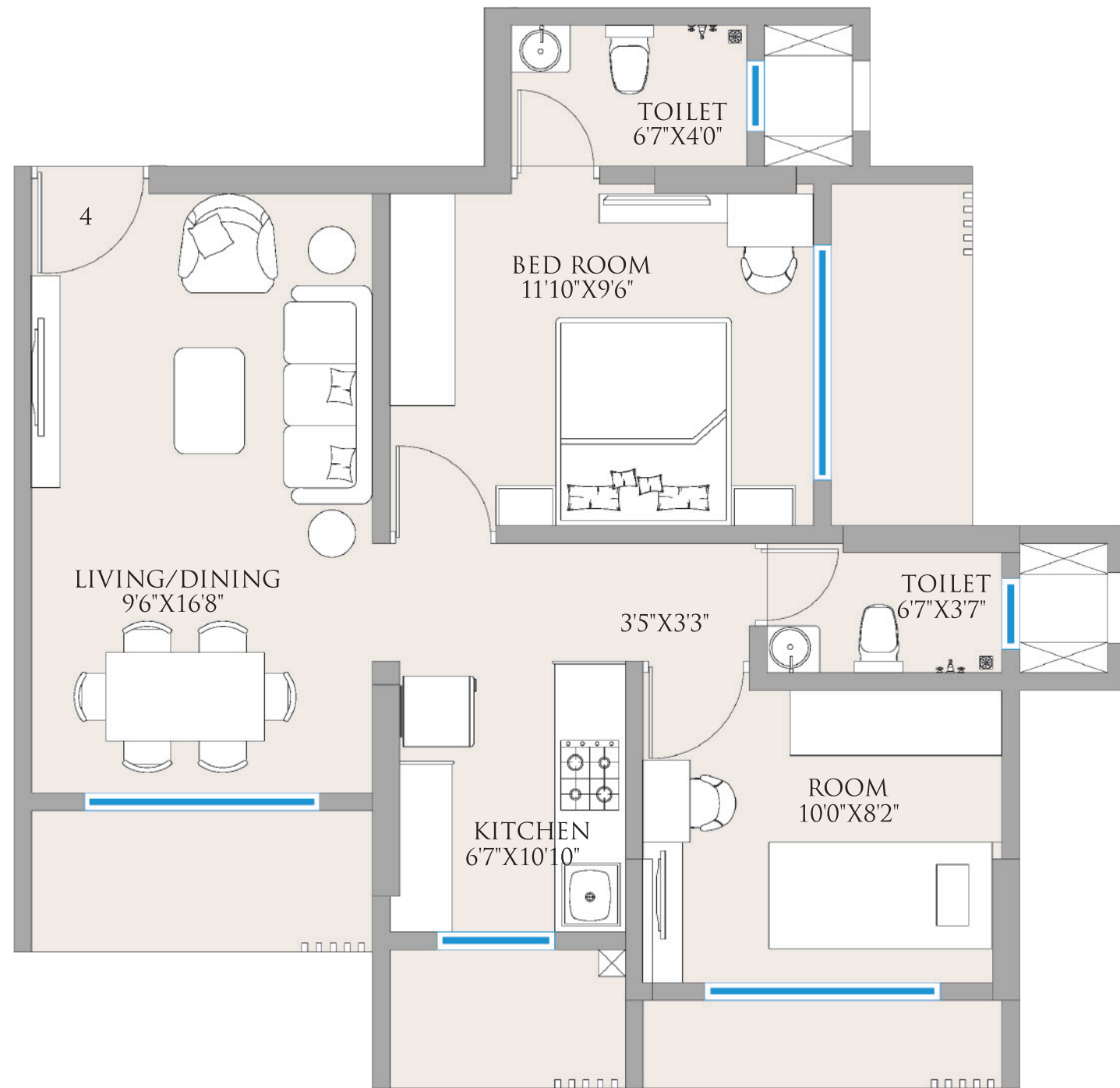
575 SQ.FT.

ISOMETRIC VIEW



2-BHK GRANDE (UNIT 3)

UNIT PLAN



520 SQ.FT.

ISOMETRIC VIEW



2-BHK DELUXE (UNIT 4)



A GLIMPSE OF YOUR PRISTINE LIFE

Project Highlights

- Magnificent Tower in Modern Classic Style
- Green Boulevards with Lush Tree Trail
- 2 BHK Grand Residences
- Home Automation System & Digital Door Locks
- Grand Entrance Lobby with 2 High-speed Elevators
- Kids Play Area and Green Landscaping
- Avant-garde Lifestyle Avenues on Rooftop
- Parking Tower with Mechanical Car Parking

Apartment Features

- Well-designed Living Spaces
- Spacious Bedrooms
- Modular Kitchen
- Bath Spaces with World-class Sanitary Fittings

Lifestyle Privileges

- Family Zone with Rooftop Landscaping
- Sky Lounge with Sit-outs
- Sky Yoga and Meditation Zone
- Well-equipped Fitness Centre
- Children's Play Zone



THE NEW-AGE REALTY GROUP

Platinum Corp. represents a new age real estate development group that has a legacy of delivering Hi-Tech Value Homes for modern day urban India, across high-growth regions at affordable prices, through flexible payment plans. Its Promoters are highly qualified real estate professionals with a strong track record of delivering high quality projects on time. Their sharp business acumen, coupled with exceptional PR skills and a professional and ethical approach, have enabled the company to carve out a niche for itself in Mumbai's competitive Real Estate market. The promoters have adopted the highest levels of business ethics, transparency and best global practices from their international exposure and experience, and have created the brand - "Platinum Corp."

Platinum Corp. is mentored and supported by large and reputed corporate houses and financial institutions of the country, who are continuously encouraging its promoters to explore larger growth opportunities. With innovation at its heart and a customer-centric approach, Platinum Corp. has inspired the trust of both, its Customers and its Investors, thereby creating social, emotional and financial wealth for all its stakeholders. Having pioneered the concept of providing and successfully delivering Hi-tech Value Homes for modern urban Indians at a location of their choice, Platinum Corp. aims to continue the trend of offering a "Priceless Lifestyle" to its valued customers. With a multitude of completed and ongoing projects offering 1, 2 and 3 bedroom apartments at prime locations of Mumbai, Platinum Corp. is gearing up to become one of the most sought-after Developers in Mumbai.

Recognition, in the form of various awards and accolades, as well as in the form of customer testimonials, has not only reinstated what Platinum Corp stands for, but has also given an opportunity to the company to stay committed and focused on meeting the ever-changing needs of the end user - its valued customer.

COMPLETED PROJECTS



PLATINUM CASA DIVINE
ANDHERI (W)



PLATINUM TOWER - 4
ANDHERI (W)



PLATINUM TOWER - 1
ANDHERI (W)

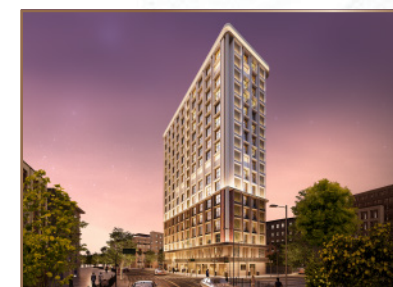


LORD'S
BHANDUP (W)



PLATINUM PRIVÉ
ANDHERI (W)

ONGOING PROJECTS



PLATINUM 53 WEST
ANDHERI (W)



PLATINUM LIFE
ANDHERI (W)



PLATINUM CASA MILLENNIA
ANDHERI (W)



PLATINUM PARK
ANDHERI (W)



PLATINUM PRISTINE
ANDHERI (W)



PLATINUM AVENUE
KHAR (W)

UPCOMING PROJECTS

IRLA, VILE PARLE (W) | S. V. ROAD, KHAR (W)

www.platinumcorp.in

A PROJECT BY



For Details Call:

Aashi Dardi: 808080 4128 | Dimple Patel: 808080 4132 | Hiral Patel: 808080 4136

Sameer Mhapankar: 808080 4125 | Mukesh Dave: 8422865745 | Amit Jadhav: 7506948641

Site Address: Platinum Pristine, Plot 122, Model Town, Off JP Road, Andheri (West), Mumbai - 400053

Sales Office: Platinum Corp. Experience Centre, Platinum Life, D. N. Nagar, Off Link Road, Andheri (W), Mumbai - 400053.

Corporate Office: Platinum Corp., 8th & 9th Floors, Peninsula Heights, CD Barfiwala Road, Juhu Lane, Andheri (West), Mumbai - 400058. Tel: 022 2621 6000 | Email: sales@platinumcorp.in

Vaastu Consultant: Acharya Jaspreet Singh



P51800032796

<https://maharera.mahaonline.gov.in>

All plans, features, images, facilities, dimensions and details are tentative and subject to approvals from authorities concerned. Commuting time, specifications, furniture, fixtures and visuals are indicative only. You are required to verify all the details, including approvals, areas, amenities, services, terms of sales, payments and other relevant terms independently with Developer's sales team / office, also by physically visiting the project site and from the authorized website of MahaRERA. All images, 3D views are Artist's impressions and are subject to change at the sole discretion of the Developer. The project is being developed by Platinum Gruhnirman LLP. Home Loans available from all leading Banks & HFIs.